

Datasheet for ABIN1537060
anti-TAS2R3 antibody (C-Term)[Go to Product page](#)

1 Image

Overview

Quantity:	400 µL
Target:	TAS2R3
Binding Specificity:	AA 287-313, C-Term
Reactivity:	Human
Host:	Rabbit
Clonality:	Polyclonal
Conjugate:	This TAS2R3 antibody is un-conjugated
Application:	Western Blotting (WB)

Product Details

Immunogen:	This TAS2R3 antibody is generated from rabbits immunized with a KLH conjugated synthetic peptide between 287-313 amino acids from the C-terminal region of human TAS2R3.
Clone:	RB39898
Isotype:	Ig Fraction
Purification:	This antibody is purified through a protein A column, followed by peptide affinity purification.

Target Details

Target:	TAS2R3
Alternative Name:	TAS2R3 (TAS2R3 Products)
Background:	This gene encodes a member of a family of candidate taste receptors that are members of the

Target Details

G protein-coupled receptor superfamily and that are specifically expressed by taste receptor cells of the tongue and palate epithelia. These apparently intronless taste receptor genes encode a 7-transmembrane receptor protein, functioning as a bitter taste receptor. This gene is clustered with another 3 candidate taste receptor genes in chromosome 7 and is genetically linked to loci that influence bitter perception.

Molecular Weight: 35915

Gene ID: 50831

NCBI Accession: [NP_058639](#)

UniProt: [Q9NYW6](#)

Application Details

Application Notes: WB: 1:1000

Restrictions: For Research Use only

Handling

Format: Liquid

Buffer: Purified polyclonal antibody supplied in PBS with 0.09 % (W/V) sodium azide.

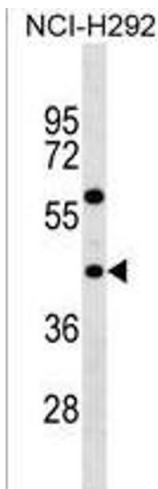
Preservative: Sodium azide

Precaution of Use: This product contains Sodium azide: a POISONOUS AND HAZARDOUS SUBSTANCE which should be handled by trained staff only.

Storage: 4 °C, -20 °C

Storage Comment: TAS2R3 Antibody (C-term) can be refrigerated at 2-8 °C for up to 6 months. For long term storage, keep at -20 °C.

Expiry Date: 6 months



Western Blotting

Image 1. TAS2R3 Antibody (C-term) (ABIN1537060 and ABIN2838128) western blot analysis in NCI- cell line lysates (35 µg/lane). This demonstrates the TAS2R3 antibody detected the TAS2R3 protein (arrow).