

Datasheet for ABIN1537070  
**anti-MLF1IP antibody (C-Term)**[Go to Product page](#)

## 1 Image

## Overview

Quantity:	400 µL
Target:	MLF1IP
Binding Specificity:	AA 292-319, C-Term
Reactivity:	Human
Host:	Rabbit
Clonality:	Polyclonal
Conjugate:	This MLF1IP antibody is un-conjugated
Application:	Western Blotting (WB)

## Product Details

Immunogen:	This MLF1IP antibody is generated from rabbits immunized with a KLH conjugated synthetic peptide between 292-319 amino acids from the C-terminal region of human MLF1IP.
Clone:	RB37081
Isotype:	Ig Fraction
Purification:	This antibody is purified through a protein A column, followed by peptide affinity purification.

## Target Details

Target:	MLF1IP
Alternative Name:	MLF1IP ( <a href="#">MLF1IP Products</a> )
Background:	The centromere is a specialized chromatin domain, present throughout the cell cycle, that acts

## Target Details

as a platform on which the transient assembly of the kinetochore occurs during mitosis. All active centromeres are characterized by the presence of long arrays of nucleosomes in which CENPA (MIM 117139) replaces histone H3 (see MIM 601128). MLF1IP, or CENPU, is an additional factor required for centromere assembly (Foltz et al., 2006 [PubMed 16622419]).

Molecular Weight: 47522

Gene ID: 79682

NCBI Accession: [NP\\_078905](#)

UniProt: [Q71F23](#)

## Application Details

Application Notes: WB: 1:1000

Restrictions: For Research Use only

## Handling

Format: Liquid

Buffer: Purified polyclonal antibody supplied in PBS with 0.09 % (W/V) sodium azide.

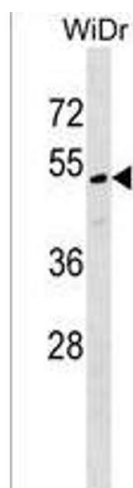
Preservative: Sodium azide

Precaution of Use: This product contains Sodium azide: a POISONOUS AND HAZARDOUS SUBSTANCE which should be handled by trained staff only.

Storage: 4 °C, -20 °C

Storage Comment: MLF1IP Antibody (C-term) can be refrigerated at 2-8 °C for up to 6 months. For long term storage, keep at -20 °C.

Expiry Date: 6 months



#### Western Blotting

**Image 1.** MLF1IP Antibody (C-term) (ABIN1537070 and ABIN2849045) western blot analysis in WiDr cell line lysates (35 µg/lane). This demonstrates the MLF1IP antibody detected the MLF1IP protein (arrow).