

Datasheet for ABIN1537071
anti-YIPF3 antibody (C-Term)



[Go to Product page](#)

1 Image

Overview

Quantity:	400 µL
Target:	YIPF3
Binding Specificity:	AA 292-321, C-Term
Reactivity:	Human, Mouse
Host:	Rabbit
Clonality:	Polyclonal
Conjugate:	This YIPF3 antibody is un-conjugated
Application:	Western Blotting (WB)

Product Details

Immunogen:	This YIPF3 antibody is generated from rabbits immunized with a KLH conjugated synthetic peptide between 292-321 amino acids from the C-terminal region of human YIPF3.
Clone:	RB36585
Isotype:	Ig Fraction
Purification:	This antibody is purified through a protein A column, followed by peptide affinity purification.

Target Details

Target:	YIPF3
Alternative Name:	YIPF3 (YIPF3 Products)
Background:	YIPF3 may play a role in hematopoiesis.

Target Details

Molecular Weight:	38248
Gene ID:	25844
NCBI Accession:	NP_056203
UniProt:	Q9GZM5

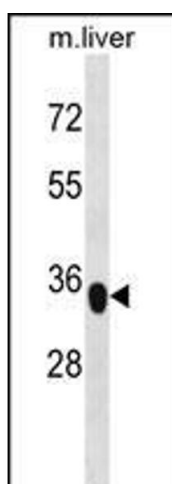
Application Details

Application Notes:	WB: 1:1000
Restrictions:	For Research Use only

Handling

Format:	Liquid
Buffer:	Purified polyclonal antibody supplied in PBS with 0.09 % (W/V) sodium azide.
Preservative:	Sodium azide
Precaution of Use:	This product contains Sodium azide: a POISONOUS AND HAZARDOUS SUBSTANCE which should be handled by trained staff only.
Storage:	4 °C,-20 °C
Storage Comment:	YIPF3 Antibody (C-term) can be refrigerated at 2-8 °C for up to 6 months. For long term storage, keep at -20 °C.
Expiry Date:	6 months

Images



Western Blotting

Image 1. YIPF3 Antibody (C-term) (ABIN1537071 and ABIN2848614) western blot analysis in mouse liver tissue lysates (35 µg/lane). This demonstrates the YIPF3 antibody detected the YIPF3 protein (arrow).