



[Go to Product page](#)

Datasheet for ABIN1537072
anti-OSTM1 antibody (C-Term)

1 Image

Overview

Quantity:	400 µL
Target:	OSTM1
Binding Specificity:	AA 292-321, C-Term
Reactivity:	Human
Host:	Rabbit
Clonality:	Polyclonal
Conjugate:	This OSTM1 antibody is un-conjugated
Application:	Western Blotting (WB)

Product Details

Immunogen:	This OSTM1 antibody is generated from rabbits immunized with a KLH conjugated synthetic peptide between 292-321 amino acids from the C-terminal region of human OSTM1.
Clone:	RB33416
Isotype:	Ig Fraction
Predicted Reactivity:	M
Purification:	This antibody is purified through a protein A column, followed by peptide affinity purification.

Target Details

Target:	OSTM1
Alternative Name:	OSTM1 (OSTM1 Products)

Target Details

Background: This gene encodes a protein that may be involved in the degradation of G proteins via the ubiquitin-dependent proteasome pathway. The encoded protein binds to members of subfamily A of the regulator of the G-protein signaling (RGS) family through an N-terminal leucine-rich region. This protein also has a central RING finger-like domain and E3 ubiquitin ligase activity. This protein is highly conserved from flies to humans. Defects in this gene may cause the autosomal recessive, infantile malignant form of osteopetrosis.

Molecular Weight: 37257

Gene ID: 28962

NCBI Accession: [NP_054747](#)

UniProt: [Q86WC4](#)

Application Details

Application Notes: WB: 1:1000

Restrictions: For Research Use only

Handling

Format: Liquid

Buffer: Purified polyclonal antibody supplied in PBS with 0.09 % (W/V) sodium azide.

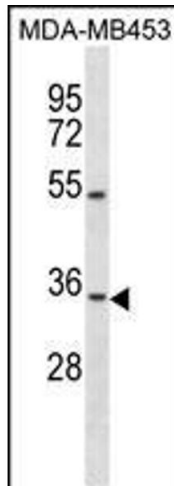
Preservative: Sodium azide

Precaution of Use: This product contains Sodium azide: a POISONOUS AND HAZARDOUS SUBSTANCE which should be handled by trained staff only.

Storage: 4 °C, -20 °C

Storage Comment: OSTM1 Antibody (C-term) can be refrigerated at 2-8 °C for up to 6 months. For long term storage, keep at -20 °C.

Expiry Date: 6 months



Western Blotting

Image 1. OSTM1 Antibody (C-term) (ABIN1537072 and ABIN2849837) western blot analysis in MDA-M cell line lysates (35 µg/lane). This demonstrates the OSTM1 Antibody detected the OSTM1 protein (arrow).