



[Go to Product page](#)

Datasheet for ABIN1537073
anti-Sbk2 antibody (C-Term)

1 Image

Overview

Quantity:	400 µL
Target:	Sbk2 (SBK2)
Binding Specificity:	AA 293-320, C-Term
Reactivity:	Mouse
Host:	Rabbit
Clonality:	Polyclonal
Conjugate:	This Sbk2 antibody is un-conjugated
Application:	Western Blotting (WB)

Product Details

Immunogen:	This Mouse Sbk2 antibody is generated from rabbits immunized with a KLH conjugated synthetic peptide between 293-320 amino acids from the C-terminal region of mouse Sbk2.
Clone:	RB37135
Isotype:	Ig Fraction
Purification:	This antibody is purified through a protein A column, followed by peptide affinity purification.

Target Details

Target:	Sbk2 (SBK2)
Alternative Name:	Sbk2 (SBK2 Products)
Background:	Belongs to the protein kinase superfamily. Ser/Thr protein kinase family. STKL subfamily.

Target Details

Contains 1 protein kinase domain.

Molecular Weight: 39699

Gene ID: 381836

NCBI Accession: [NP_001139801](#)

UniProt: [P0C5K1](#)

Application Details

Application Notes: WB: 1:1000

Restrictions: For Research Use only

Handling

Format: Liquid

Buffer: Purified polyclonal antibody supplied in PBS with 0.09 % (W/V) sodium azide.

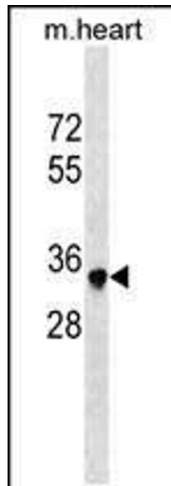
Preservative: Sodium azide

Precaution of Use: This product contains Sodium azide: a POISONOUS AND HAZARDOUS SUBSTANCE which should be handled by trained staff only.

Storage: 4 °C, -20 °C

Storage Comment: Mouse Sbk2 Antibody (C-term) can be refrigerated at 2-8 °C for up to 6 months. For long term storage, keep at -20 °C.

Expiry Date: 6 months



Western Blotting

Image 1. Mouse Sbk2 Antibody (C-term) (ABIN1537073 and ABIN2848942) western blot analysis in mouse heart tissue lysates (35 µg/lane). This demonstrates the Sbk2 antibody detected the Sbk2 protein (arrow).