

Datasheet for ABIN1537076
anti-PRR25 antibody (C-Term)[Go to Product page](#)

1 Image

Overview

Quantity:	400 µL
Target:	PRR25
Binding Specificity:	AA 294-320, C-Term
Reactivity:	Human
Host:	Rabbit
Clonality:	Polyclonal
Conjugate:	This PRR25 antibody is un-conjugated
Application:	Western Blotting (WB)

Product Details

Immunogen:	This PRR25 antibody is generated from rabbits immunized with a KLH conjugated synthetic peptide between 294-320 amino acids from the C-terminal region of human PRR25.
Clone:	RB30571
Isotype:	Ig Fraction
Purification:	This antibody is purified through a protein A column, followed by peptide affinity purification.

Target Details

Target:	PRR25
Alternative Name:	PRR25 (PRR25 Products)
Background:	The function of this protein remains unknown.

Target Details

Molecular Weight:	40998
Gene ID:	388199
NCBI Accession:	NP_001013660
UniProt:	Q96S07

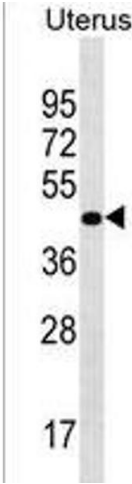
Application Details

Application Notes:	WB: 1:1000
Restrictions:	For Research Use only

Handling

Format:	Liquid
Buffer:	Purified polyclonal antibody supplied in PBS with 0.09 % (W/V) sodium azide.
Preservative:	Sodium azide
Precaution of Use:	This product contains Sodium azide: a POISONOUS AND HAZARDOUS SUBSTANCE which should be handled by trained staff only.
Storage:	4 °C, -20 °C
Storage Comment:	PRR25 Antibody (C-term) can be refrigerated at 2-8 °C for up to 6 months. For long term storage, keep at -20 °C.
Expiry Date:	6 months

Images



Western Blotting

Image 1. PRR25 Antibody (C-term) (ABIN1537076 and ABIN2850321) western blot analysis in Uterus tissue lysates (35 µg/lane). This demonstrates the PRR25 antibody detected the PRR25 protein (arrow).