

Datasheet for ABIN1537079
anti-CRYZL1 antibody (C-Term)



[Go to Product page](#)

1 Image

Overview

Quantity:	400 µL
Target:	CRYZL1
Binding Specificity:	AA 296-323, C-Term
Reactivity:	Human
Host:	Rabbit
Clonality:	Polyclonal
Conjugate:	This CRYZL1 antibody is un-conjugated
Application:	Western Blotting (WB)

Product Details

Immunogen:	This CRYZL1 antibody is generated from rabbits immunized with a KLH conjugated synthetic peptide between 296-323 amino acids from the C-terminal region of human CRYZL1.
Clone:	RB37308
Isotype:	Ig Fraction
Predicted Reactivity:	B
Purification:	This antibody is purified through a protein A column, followed by peptide affinity purification.

Target Details

Target:	CRYZL1
Alternative Name:	CRYZL1 (CRYZL1 Products)

Target Details

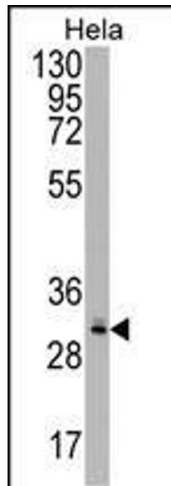
Background:	This gene encodes a protein that has sequence similarity to zeta crystallin, also known as quinone oxidoreductase. This zeta crystallin-like protein also contains an NAD(P)H binding site. Alternatively spliced transcript variants have been observed but their full-length nature has not been completely determined.
Molecular Weight:	38697
Gene ID:	9946
NCBI Accession:	NP_665857
UniProt:	O95825

Application Details

Application Notes:	WB: 1:1000
Restrictions:	For Research Use only

Handling

Format:	Liquid
Buffer:	Purified polyclonal antibody supplied in PBS with 0.09 % (W/V) sodium azide.
Preservative:	Sodium azide
Precaution of Use:	This product contains Sodium azide: a POISONOUS AND HAZARDOUS SUBSTANCE which should be handled by trained staff only.
Storage:	4 °C,-20 °C
Storage Comment:	CRYZL1 Antibody (C-term) can be refrigerated at 2-8 °C for up to 6 months. For long term storage, keep at -20 °C.
Expiry Date:	6 months



Western Blotting

Image 1. CRYZL1 Antibody (C-term) (ABIN1537079 and ABIN2848783) western blot analysis in HeLa cell line lysates (35 µg/lane). This demonstrates the CRYZL1 antibody detected the CRYZL1 protein (arrow).