

Datasheet for ABIN1537082  
**anti-GTF2A1 antibody (C-Term)**[Go to Product page](#)

## 1 Image

## Overview

Quantity:	400 µL
Target:	GTF2A1
Binding Specificity:	AA 297-326, C-Term
Reactivity:	Human, Mouse
Host:	Rabbit
Clonality:	Polyclonal
Conjugate:	This GTF2A1 antibody is un-conjugated
Application:	Western Blotting (WB)

## Product Details

Immunogen:	This GTF2A1 antibody is generated from rabbits immunized with a KLH conjugated synthetic peptide between 297-326 amino acids from the C-terminal region of human GTF2A1.
Clone:	RB36895
Isotype:	Ig Fraction
Predicted Reactivity:	Rat
Purification:	This antibody is purified through a protein A column, followed by peptide affinity purification.

## Target Details

Target:	GTF2A1
Alternative Name:	GTF2A1 ( <a href="#">GTF2A1 Products</a> )

## Target Details

**Background:** Accurate transcription initiation on TATA-containing class II genes involves the ordered assembly of RNA polymerase II (POLR2A, MIM 180660) and several general initiation factors (summarized by DeJong and Roeder, 1993 [PubMed 8224848]). One of these factors is TFIIA, which when purified from HeLa extracts consists of 35-, 19-, and 12-kD subunits.

**Molecular Weight:** 41514

**Gene ID:** 2957

**NCBI Accession:** [NP\\_001265869](#), [NP\\_056943](#), [NP\\_963889](#)

**UniProt:** [P52655](#)

## Application Details

**Application Notes:** WB: 1:1000

**Restrictions:** For Research Use only

## Handling

**Format:** Liquid

**Buffer:** Purified polyclonal antibody supplied in PBS with 0.09 % (W/V) sodium azide.

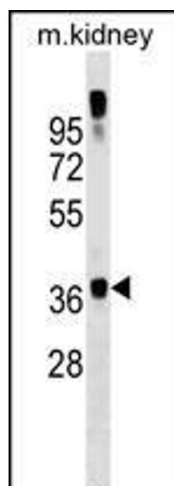
**Preservative:** Sodium azide

**Precaution of Use:** This product contains Sodium azide: a POISONOUS AND HAZARDOUS SUBSTANCE which should be handled by trained staff only.

**Storage:** 4 °C, -20 °C

**Storage Comment:** GTF2A1 Antibody (C-term) can be refrigerated at 2-8 °C for up to 6 months. For long term storage, keep at -20 °C.

**Expiry Date:** 6 months



#### Western Blotting

**Image 1.** GTF2A1 Antibody (C-term) (ABIN1537082 and ABIN2849237) western blot analysis in mouse kidney tissue lysates (35 µg/lane). This demonstrates the GTF2A1 antibody detected the GTF2A1 protein (arrow).