



[Go to Product page](#)

Datasheet for ABIN1537083
anti-MDH2 antibody (C-Term)

1 Image

Overview

Quantity:	400 µL
Target:	MDH2
Binding Specificity:	AA 297-326, C-Term
Reactivity:	Human
Host:	Rabbit
Clonality:	Polyclonal
Conjugate:	This MDH2 antibody is un-conjugated
Application:	Western Blotting (WB)

Product Details

Immunogen:	This MDH2 antibody is generated from rabbits immunized with a KLH conjugated synthetic peptide between 297-326 amino acids from the C-terminal region of human MDH2.
Clone:	RB22957
Isotype:	Ig Fraction
Predicted Reactivity:	Pr
Purification:	This antibody is purified through a protein A column, followed by peptide affinity purification.

Target Details

Target:	MDH2
Alternative Name:	MDH2 (MDH2 Products)

Target Details

Background: Malate dehydrogenase catalyzes the reversible oxidation of malate to oxaloacetate, utilizing the NAD/NADH cofactor system in the citric acid cycle. The protein encoded by this gene is localized to the mitochondria and may play pivotal roles in the malate-aspartate shuttle that operates in the metabolic coordination between cytosol and mitochondria. [provided by RefSeq].

Molecular Weight: 35503

Gene ID: 4191

NCBI Accession: [NP_001269332](#), [NP_001269333](#), [NP_005909](#)

UniProt: [P40926](#)

Application Details

Application Notes: WB: 1:1000

Restrictions: For Research Use only

Handling

Format: Liquid

Buffer: Purified polyclonal antibody supplied in PBS with 0.09 % (W/V) sodium azide.

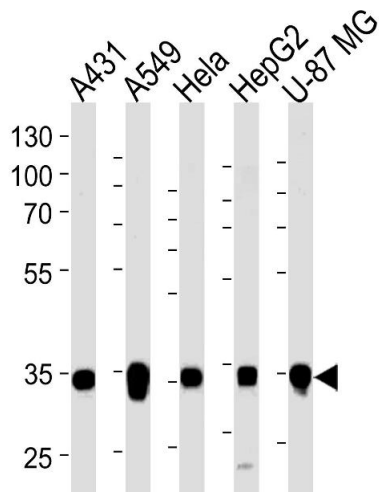
Preservative: Sodium azide

Precaution of Use: This product contains Sodium azide: a POISONOUS AND HAZARDOUS SUBSTANCE which should be handled by trained staff only.

Storage: 4 °C, -20 °C

Storage Comment: MDH2 Antibody (C-term) can be refrigerated at 2-8 °C for up to 6 months. For long term storage, keep at -20 °C.

Expiry Date: 6 months



Western Blotting

Image 1. Western blot analysis of lysates from A431, A549, HeLa, HepG2, U-87 MG cell line (from left to right), using MDH2 Antibody (C-term) (ABIN1537083 and ABIN2849638). (ABIN1537083 and ABIN2849638) was diluted at 1:1000 at each lane. A goat anti-rabbit IgG H&L(HRP) at 1:5000 dilution was used as the secondary antibody. Lysates at 35 μ g per lane.