



[Go to Product page](#)

Datasheet for ABIN1537091

## anti-CLEC18C antibody (C-Term)

### 1 Image

#### Overview

Quantity:	400 µL
Target:	CLEC18C
Binding Specificity:	AA 300-326, C-Term
Reactivity:	Human
Host:	Rabbit
Clonality:	Polyclonal
Conjugate:	This CLEC18C antibody is un-conjugated
Application:	Western Blotting (WB)

#### Product Details

Immunogen:	This CLEC18C antibody is generated from rabbits immunized with a KLH conjugated synthetic peptide between 300-326 amino acids from the C-terminal region of human CLEC18C.
Clone:	RB38734
Isotype:	Ig Fraction
Purification:	This antibody is purified through a protein A column, followed by peptide affinity purification.

#### Target Details

Target:	CLEC18C
Alternative Name:	CLEC18C ( <a href="#">CLEC18C Products</a> )
Background:	The function of this protein remains unknown.

## Target Details

Molecular Weight:	49585
Gene ID:	283971
NCBI Accession:	<a href="#">NP_775890</a>
UniProt:	<a href="#">Q8NCF0</a>

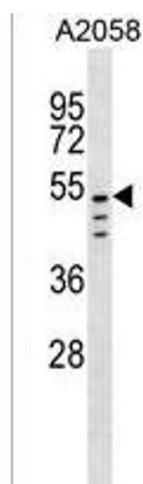
## Application Details

Application Notes:	WB: 1:1000
Restrictions:	For Research Use only

## Handling

Format:	Liquid
Buffer:	Purified polyclonal antibody supplied in PBS with 0.09 % (W/V) sodium azide.
Preservative:	Sodium azide
Precaution of Use:	This product contains Sodium azide: a POISONOUS AND HAZARDOUS SUBSTANCE which should be handled by trained staff only.
Storage:	4 °C, -20 °C
Storage Comment:	CLEC18C Antibody (C-term) can be refrigerated at 2-8 °C for up to 6 months. For long term storage, keep at -20 °C.
Expiry Date:	6 months

## Validation report #102829 for Western Blotting (WB)



### Western Blotting

**Image 1.** CLEC18C Antibody (C-term) (ABIN1537091 and ABIN2850339) western blot analysis in cell line lysates (35  $\mu$ g/lane). This demonstrates the CLEC18C antibody detected the CLEC18C protein (arrow).