



[Go to Product page](#)

Datasheet for ABIN1537094  
**anti-MRPL39 antibody (C-Term)**

1 Image

Overview

Quantity:	400 µL
Target:	MRPL39
Binding Specificity:	AA 302-330, C-Term
Reactivity:	Human
Host:	Rabbit
Clonality:	Polyclonal
Conjugate:	This MRPL39 antibody is un-conjugated
Application:	Western Blotting (WB)

Product Details

Immunogen:	This MRPL39 antibody is generated from rabbits immunized with a KLH conjugated synthetic peptide between 302-330 amino acids from the C-terminal region of human MRPL39.
Clone:	RB36593
Isotype:	Ig Fraction
Purification:	This antibody is purified through a protein A column, followed by peptide affinity purification.

Target Details

Target:	MRPL39
Alternative Name:	MRPL39 ( <a href="#">MRPL39 Products</a> )
Background:	Mammalian mitochondrial ribosomal proteins are encoded by nuclear genes and help in protein

## Target Details

---

synthesis within the mitochondrion. Mitochondrial ribosomes (mitoribosomes) consist of a small 28S subunit and a large 39S subunit. They have an estimated 75 % protein to rRNA composition compared to prokaryotic ribosomes, where this ratio is reversed. Another difference between mammalian mitoribosomes and prokaryotic ribosomes is that the latter contain a 5S rRNA. Among different species, the proteins comprising the mitoribosome differ greatly in sequence, and sometimes in biochemical properties, which prevents easy recognition by sequence homology. This gene encodes a 39S subunit protein. Two transcript variants encoding distinct isoforms have been described. A pseudogene corresponding to this gene is found on chromosome 5q.

Molecular Weight:	38712
Gene ID:	54148
NCBI Accession:	<a href="#">NP_059142</a> , <a href="#">NP_542984</a>
UniProt:	<a href="#">Q9NYK5</a>

## Application Details

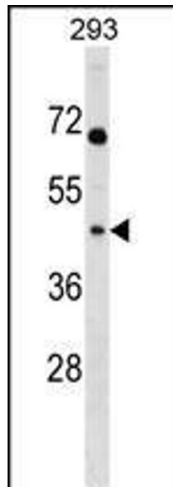
---

Application Notes:	WB: 1:1000
Restrictions:	For Research Use only

## Handling

---

Format:	Liquid
Buffer:	Purified polyclonal antibody supplied in PBS with 0.09 % (W/V) sodium azide.
Preservative:	Sodium azide
Precaution of Use:	This product contains Sodium azide: a POISONOUS AND HAZARDOUS SUBSTANCE which should be handled by trained staff only.
Storage:	4 °C, -20 °C
Storage Comment:	MRPL39 Antibody (C-term) can be refrigerated at 2-8 °C for up to 6 months. For long term storage, keep at -20 °C.
Expiry Date:	6 months



#### Western Blotting

**Image 1.** MRPL39 Antibody (C-term) (ABIN1537094 and ABIN2848617) western blot analysis in 293 cell line lysates (35 µg/lane). This demonstrates the MRPL39 antibody detected the MRPL39 protein (arrow).