

Datasheet for ABIN1537098
anti-RCN1 antibody (C-Term)[Go to Product page](#)

1 Image

Overview

Quantity:	400 µL
Target:	RCN1
Binding Specificity:	AA 305-331, C-Term
Reactivity:	Human
Host:	Rabbit
Clonality:	Polyclonal
Conjugate:	This RCN1 antibody is un-conjugated
Application:	Western Blotting (WB)

Product Details

Immunogen:	This RCN1 antibody is generated from rabbits immunized with a KLH conjugated synthetic peptide between 305-331 amino acids from the C-terminal region of human RCN1.
Clone:	RB36512
Isotype:	Ig Fraction
Predicted Reactivity:	M
Purification:	This antibody is purified through a protein A column, followed by peptide affinity purification.

Target Details

Target:	RCN1
Alternative Name:	RCN1 (RCN1 Products)

Target Details

Background: Reticulocalbin 1 is a calcium-binding protein located in the lumen of the ER. The protein contains six conserved regions with similarity to a high affinity Ca(+2)-binding motif, the EF-hand. High conservation of amino acid residues outside of these motifs, in comparison to mouse reticulocalbin, is consistent with a possible biochemical function besides that of calcium binding. In human endothelial and prostate cancer cell lines this protein localizes to the plasma membrane.

Molecular Weight: 38890

Gene ID: 5954

NCBI Accession: [NP_002892](#)

UniProt: [Q15293](#)

Application Details

Application Notes: WB: 1:1000

Restrictions: For Research Use only

Handling

Format: Liquid

Buffer: Purified polyclonal antibody supplied in PBS with 0.09 % (W/V) sodium azide.

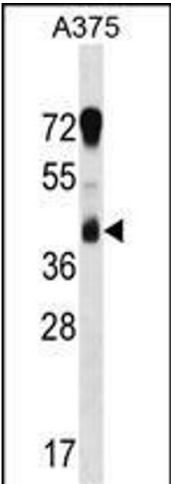
Preservative: Sodium azide

Precaution of Use: This product contains Sodium azide: a POISONOUS AND HAZARDOUS SUBSTANCE which should be handled by trained staff only.

Storage: 4 °C, -20 °C

Storage Comment: RCN1 Antibody (C-term) can be refrigerated at 2-8 °C for up to 6 months. For long term storage, keep at -20 °C.

Expiry Date: 6 months



Western Blotting

Image 1. RCN1 Antibody (C-term) (ABIN1537098 and ABIN2848451) western blot analysis in cell line lysates (35 µg/lane). This demonstrates the RCN1 antibody detected the RCN1 protein (arrow).