



Datasheet for ABIN1537101  
**anti-ERLIN2 antibody (C-Term)**



[Go to Product page](#)

4 Images

Overview

Quantity:	400 µL
Target:	ERLIN2
Binding Specificity:	AA 307-333, C-Term
Reactivity:	Human, Rat, Mouse
Host:	Rabbit
Clonality:	Polyclonal
Conjugate:	This ERLIN2 antibody is un-conjugated
Application:	Western Blotting (WB)

Product Details

Immunogen:	This ERLIN2 antibody is generated from rabbits immunized with a KLH conjugated synthetic peptide between 307-333 amino acids from the C-terminal region of human ERLIN2.
Clone:	RB38591
Isotype:	Ig Fraction
Purification:	This antibody is purified through a protein A column, followed by peptide affinity purification.

Target Details

Target:	ERLIN2
Alternative Name:	ERLIN2 ( <a href="#">ERLIN2 Products</a> )
Background:	Component of the ERLIN1/ERLIN2 complex which mediates the endoplasmic reticulum-

## Target Details

---

associated degradation (ERAD) of inositol 1,4,5-trisphosphate receptors (IP3Rs). Also involved in ITPR1 degradation by the ERAD pathway.

Molecular Weight: 37840

Gene ID: 11160

NCBI Accession: [NP\\_001003790](#), [NP\\_001003791](#), [NP\\_009106](#)

UniProt: [O94905](#)

## Application Details

---

Application Notes: WB: 1:2000. WB: 1:2000. WB: 1:2000. WB: 1:1000

Restrictions: For Research Use only

## Handling

---

Format: Liquid

Buffer: Purified polyclonal antibody supplied in PBS with 0.09 % (W/V) sodium azide.

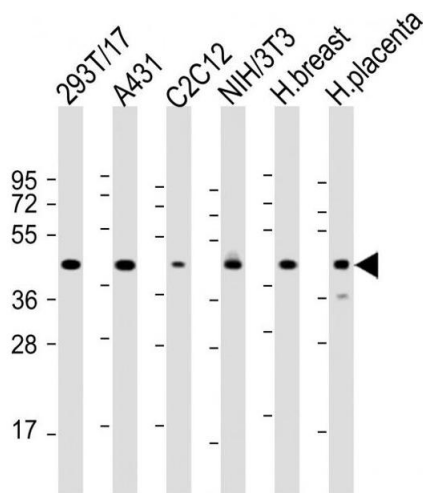
Preservative: Sodium azide

Precaution of Use: This product contains Sodium azide: a POISONOUS AND HAZARDOUS SUBSTANCE which should be handled by trained staff only.

Storage: 4 °C,-20 °C

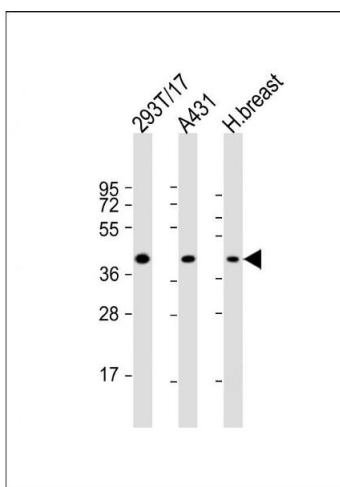
Storage Comment: ERLIN2 Antibody (C-term) can be refrigerated at 2-8 °C for up to 6 months. For long term storage, keep at -20 °C.

Expiry Date: 6 months



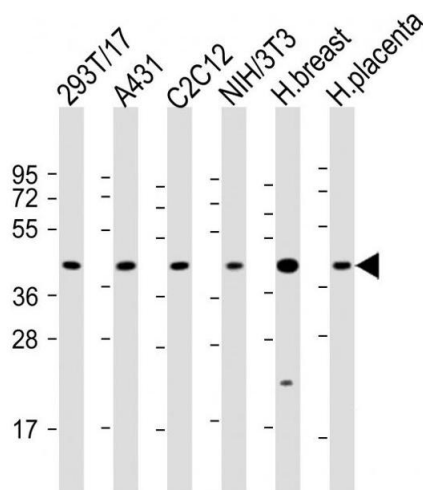
### Western Blotting

**Image 1.** All lanes : Anti-ERLIN2 Antibody (C-term) at 1:2000 dilution Lane 1: 293T/17 whole cell lysate Lane 2: A431 whole cell lysate Lane 3: C2C12 whole cell lysate Lane 4: NIH/3T3 whole cell lysate Lane 5: human breast lysate Lane 6: human placenta lysate Lysates/proteins at 20 µg per lane. Secondary Goat Anti-Rabbit IgG, (H+L), Peroxidase conjugated at 1/10000 dilution. Predicted band size : 38 kDa Blocking/Dilution buffer: 5 % NFDM/TBST.



### Western Blotting

**Image 2.** All lanes : Anti-ERLIN2 Antibody (C-term) at 1:2000 dilution Lane 1: 293T/17 whole cell lysate Lane 2: A431 whole cell lysate Lane 3: human breast lysate Lysates/proteins at 20 µg per lane. Secondary Goat Anti-Rabbit IgG, (H+L), Peroxidase conjugated at 1/10000 dilution. Predicted band size : 38 kDa Blocking/Dilution buffer: 5 % NFDM/TBST.



### Western Blotting

**Image 3.** All lanes : Anti-ERLIN2 Antibody (C-term) at 1:2000 dilution Lane 1: 293T/17 whole cell lysate Lane 2: A431 whole cell lysate Lane 3: C2C12 whole cell lysate Lane 4: NIH/3T3 whole cell lysate Lane 5: human breast lysate Lane 6: human placenta lysate Lysates/proteins at 20 µg per lane. Secondary Goat Anti-Rabbit IgG, (H+L), Peroxidase conjugated at 1/10000 dilution. Predicted band size : 38 kDa Blocking/Dilution buffer: 5 % NFDM/TBST.

Please check the [product details page](#) for more images. Overall 4 images are available for ABIN1537101.