



Datasheet for ABIN1537105
anti-TBX20 antibody (C-Term)



[Go to Product page](#)

2 Images

Overview

Quantity:	400 µL
Target:	TBX20
Binding Specificity:	AA 308-335, C-Term
Reactivity:	Human, Mouse
Host:	Rabbit
Clonality:	Polyclonal
Conjugate:	This TBX20 antibody is un-conjugated
Application:	Western Blotting (WB)

Product Details

Immunogen:	This TBX20 antibody is generated from rabbits immunized with a KLH conjugated synthetic peptide between 308-335 amino acids from the C-terminal region of human TBX20.
Clone:	RB36506
Isotype:	Ig Fraction
Purification:	This antibody is purified through a protein A column, followed by peptide affinity purification.

Target Details

Target:	TBX20
Alternative Name:	TBX20 (TBX20 Products)
Background:	This gene encodes a T-box family member. The T-box family members share a common DNA

Target Details

binding domain, termed the T-box, and they are transcription factors involved in the regulation of developmental processes. This gene is essential for heart development. Mutations in this gene are associated with diverse cardiac pathologies, including defects in septation, valvulogenesis and cardiomyopathy. Alternatively spliced transcript variants encoding different isoforms have been found for this gene.

Molecular Weight: 49232

Gene ID: 57057

NCBI Accession: [NP_001071121](#), [NP_001159692](#)

UniProt: [Q9UMR3](#)

Application Details

Application Notes: WB: 1:1000. WB: 1:1000

Restrictions: For Research Use only

Handling

Format: Liquid

Buffer: Purified polyclonal antibody supplied in PBS with 0.09 % (W/V) sodium azide.

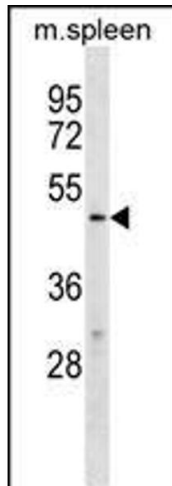
Preservative: Sodium azide

Precaution of Use: This product contains Sodium azide: a POISONOUS AND HAZARDOUS SUBSTANCE which should be handled by trained staff only.

Storage: 4 °C, -20 °C

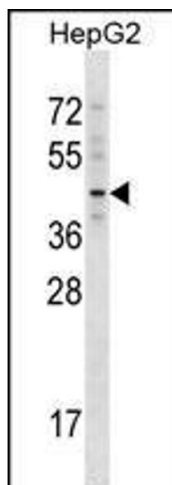
Storage Comment: TBX20 Antibody (C-term) can be refrigerated at 2-8 °C for up to 6 months. For long term storage, keep at -20 °C.

Expiry Date: 6 months



Western Blotting

Image 1. TBX20 Antibody (C-term) (ABIN1537105 and ABIN2848807) western blot analysis in mouse spleen tissue lysates (35 µg/lane). This demonstrates the TBX20 antibody detected the TBX20 protein (arrow).



Western Blotting

Image 2. TBX20 Antibody (C-term) (ABIN1537105 and ABIN2848807) western blot analysis in HepG2 cell line lysates (35 µg/lane). This demonstrates the TBX20 antibody detected the TBX20 protein (arrow).