



[Go to Product page](#)

Datasheet for ABIN1537109

## anti-Rho-related GTP-binding protein antibody (C-Term)

### 2 Images

#### Overview

Quantity:	400 µL
Target:	Rho-related GTP-binding protein (RhO (pan))
Binding Specificity:	AA 310-339, C-Term
Reactivity:	Human, Mouse, Rat
Host:	Rabbit
Clonality:	Polyclonal
Conjugate:	This Rho-related GTP-binding protein antibody is un-conjugated
Application:	Western Blotting (WB)

#### Product Details

Immunogen:	This RHO antibody is generated from rabbits immunized with a KLH conjugated synthetic peptide between 310-339 amino acids from the C-terminal region of human RHO.
Clone:	RB36659
Isotype:	Ig Fraction
Predicted Reactivity:	Pr
Purification:	This antibody is purified through a protein A column, followed by peptide affinity purification.

#### Target Details

Target:	Rho-related GTP-binding protein (RhO (pan))
Alternative Name:	RHO ( <a href="#">RhO (pan) Products</a> )

## Target Details

---

Target Type:	Chemical
Background:	Retinitis pigmentosa is an inherited progressive disease which is a major cause of blindness in western communities. It can be inherited as an autosomal dominant, autosomal recessive, or X-linked recessive disorder. In the autosomal dominant form, which comprises about 25 % of total cases, approximately 30 % of families have mutations in the gene encoding the rod photoreceptor-specific protein rhodopsin. This is the transmembrane protein which, when photoexcited, initiates the visual transduction cascade. Defects in this gene are also one of the causes of congenital stationary night blindness.
Molecular Weight:	38893
Gene ID:	6010
NCBI Accession:	<a href="#">NP_000530</a>
UniProt:	<a href="#">P08100</a>

## Application Details

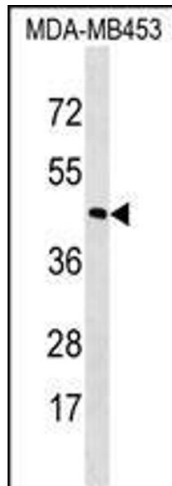
---

Application Notes:	WB: 1:2000. WB: 1:1000
Restrictions:	For Research Use only

## Handling

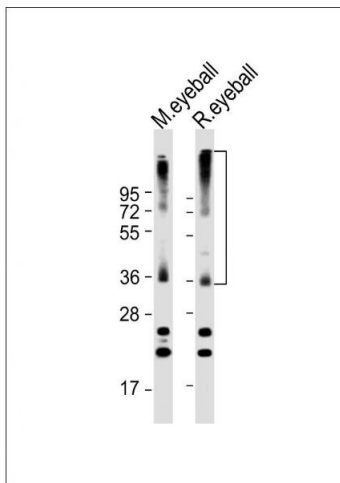
---

Format:	Liquid
Buffer:	Purified polyclonal antibody supplied in PBS with 0.09 % (W/V) sodium azide.
Preservative:	Sodium azide
Precaution of Use:	This product contains Sodium azide: a POISONOUS AND HAZARDOUS SUBSTANCE which should be handled by trained staff only.
Storage:	4 °C, -20 °C
Storage Comment:	RHO Antibody (C-term) can be refrigerated at 2-8 °C for up to 6 months. For long term storage, keep at -20 °C.
Expiry Date:	6 months



### Western Blotting

**Image 1.** RHO Antibody (C-term) (ABIN1537109 and ABIN2848632) western blot analysis in MDA-M cell line lysates (35 µg/lane). This demonstrates the RHO antibody detected the RHO protein (arrow).



### Western Blotting

**Image 2.** All lanes : Anti-RHO Antibody (C-term) at 1:2000 dilution Lane 1: mouse eyeball lysate Lane 2: rat eyeball lysate Lysates/proteins at 20 µg per lane. Secondary Goat Anti-Rabbit IgG, (H+L), Peroxidase conjugated at 1/10000 dilution. Predicted band size : 39 kDa Blocking/Dilution buffer: 5 % NFDM/TBST.