



[Go to Product page](#)

Datasheet for ABIN1537114
anti-PPP1R7 antibody (C-Term)

1 Image

Overview

Quantity:	400 µL
Target:	PPP1R7
Binding Specificity:	AA 312-340, C-Term
Reactivity:	Mouse
Host:	Rabbit
Clonality:	Polyclonal
Conjugate:	This PPP1R7 antibody is un-conjugated
Application:	Western Blotting (WB)

Product Details

Immunogen:	This PPP1R7 antibody is generated from rabbits immunized with a KLH conjugated synthetic peptide between 312-340 amino acids from the C-terminal region of human PPP1R7.
Clone:	RB30391
Isotype:	Ig Fraction
Predicted Reactivity:	Zf, Rat
Purification:	This antibody is purified through a protein A column, followed by peptide affinity purification.

Target Details

Target:	PPP1R7
Alternative Name:	PPP1R7 (PPP1R7 Products)

Target Details

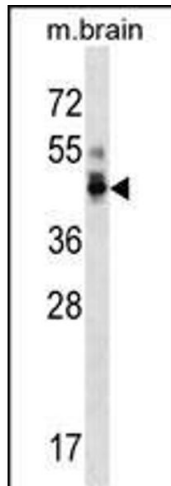
Background:	Regulatory subunit of protein phosphatase 1 (By similarity).
Molecular Weight:	41564
Gene ID:	5510
NCBI Accession:	NP_001269338 , NP_001269339 , NP_001269340 , NP_001269341 , NP_001269342 , NP_001269343 , NP_002703
UniProt:	Q15435

Application Details

Application Notes:	WB: 1:1000
Restrictions:	For Research Use only

Handling

Format:	Liquid
Buffer:	Purified polyclonal antibody supplied in PBS with 0.09 % (W/V) sodium azide.
Preservative:	Sodium azide
Precaution of Use:	This product contains Sodium azide: a POISONOUS AND HAZARDOUS SUBSTANCE which should be handled by trained staff only.
Storage:	4 °C,-20 °C
Storage Comment:	PPP1R7 Antibody (C-term) can be refrigerated at 2-8 °C for up to 6 months. For long term storage, keep at -20 °C.
Expiry Date:	6 months



Western Blotting

Image 1. P1R7 Antibody (C-term) (ABIN1537114 and ABIN2850157) western blot analysis in mouse brain tissue lysates (35 µg/lane). This demonstrates the P1R7 antibody detected the P1R7 protein (arrow).