

Datasheet for ABIN1537117
anti-QPCT antibody (C-Term)[Go to Product page](#)

1 Image

Overview

Quantity:	400 µL
Target:	QPCT
Binding Specificity:	AA 315-343, C-Term
Reactivity:	Human
Host:	Rabbit
Clonality:	Polyclonal
Conjugate:	This QPCT antibody is un-conjugated
Application:	Western Blotting (WB)

Product Details

Immunogen:	This QPCT antibody is generated from rabbits immunized with a KLH conjugated synthetic peptide between 315-343 amino acids from the C-terminal region of human QPCT.
Clone:	RB37104
Isotype:	Ig Fraction
Purification:	This antibody is purified through a protein A column, followed by peptide affinity purification.

Target Details

Target:	QPCT
Alternative Name:	QPCT (QPCT Products)
Background:	This gene encodes human pituitary glutaminy cyclase, which is responsible for the presence of

Target Details

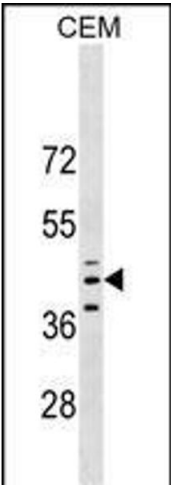
	pyroglutamyl residues in many neuroendocrine peptides. The amino acid sequence of this enzyme is 86 % identical to that of bovine glutaminyl cyclase.
Molecular Weight:	40877
Gene ID:	25797
NCBI Accession:	NP_036545
UniProt:	Q16769

Application Details

Application Notes:	WB: 1:1000
Restrictions:	For Research Use only

Handling

Format:	Liquid
Buffer:	Purified polyclonal antibody supplied in PBS with 0.09 % (W/V) sodium azide.
Preservative:	Sodium azide
Precaution of Use:	This product contains Sodium azide: a POISONOUS AND HAZARDOUS SUBSTANCE which should be handled by trained staff only.
Storage:	4 °C,-20 °C
Storage Comment:	QPCT Antibody (C-term) can be refrigerated at 2-8 °C for up to 6 months. For long term storage, keep at -20 °C.
Expiry Date:	6 months



Western Blotting

Image 1. QPCT Antibody (C-term) (ABIN1537117 and ABIN2849049) western blot analysis in CEM cell line lysates (35 µg/lane). This demonstrates the QPCT antibody detected the QPCT protein (arrow).