



[Go to Product page](#)

Datasheet for ABIN1537119
anti-CDC42EP1 antibody (C-Term)

1 Image

Overview

Quantity:	400 µL
Target:	CDC42EP1
Binding Specificity:	AA 315-343, C-Term
Reactivity:	Human
Host:	Rabbit
Clonality:	Polyclonal
Conjugate:	This CDC42EP1 antibody is un-conjugated
Application:	Western Blotting (WB)

Product Details

Immunogen:	This CDC42EP1 antibody is generated from rabbits immunized with a KLH conjugated synthetic peptide between 315-343 amino acids from the C-terminal region of human CDC42EP1.
Clone:	RB39506
Isotype:	Ig Fraction
Purification:	This antibody is purified through a protein A column, followed by peptide affinity purification.

Target Details

Target:	CDC42EP1
Alternative Name:	CDC42EP1 (CDC42EP1 Products)

Target Details

Background: CDC42 is a member of the Rho GTPase family that regulates multiple cellular activities, including actin polymerization. The protein encoded by this gene is a CDC42 binding protein that mediates actin cytoskeleton reorganization at the plasma membrane. This protein is secreted and is primarily found in bone marrow.

Molecular Weight: 40295

Gene ID: 11135

NCBI Accession: [NP_689449](#)

UniProt: [Q00587](#)

Application Details

Application Notes: WB: 1:1000

Restrictions: For Research Use only

Handling

Format: Liquid

Buffer: Purified polyclonal antibody supplied in PBS with 0.09 % (W/V) sodium azide.

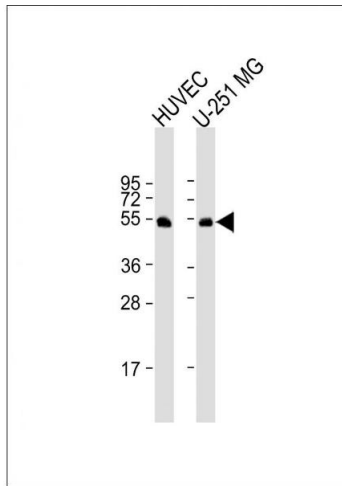
Preservative: Sodium azide

Precaution of Use: This product contains Sodium azide: a POISONOUS AND HAZARDOUS SUBSTANCE which should be handled by trained staff only.

Storage: 4 °C,-20 °C

Storage Comment: CDC42EP1 Antibody (C-term) can be refrigerated at 2-8 °C for up to 6 months. For long term storage, keep at -20 °C.

Expiry Date: 6 months



Western Blotting

Image 1. All lanes : Anti-CDC42EP1 Antibody (C-term) at 1:1000 dilution Lane 1: HUVEC whole cell lysate Lane 2: U-251 MG whole cell lysate Lysates/proteins at 20 µg per lane. Secondary Goat Anti-Rabbit IgG, (H+L), Peroxidase conjugated at 1/10000 dilution. Predicted band size : 40 kDa Blocking/Dilution buffer: 5 % NFDM/TBST.