

Datasheet for ABIN1537126  
**anti-TSSC1 antibody (C-Term)**[Go to Product page](#)

## 1 Image

## Overview

Quantity:	400 µL
Target:	TSSC1
Binding Specificity:	AA 319-348, C-Term
Reactivity:	Human
Host:	Rabbit
Clonality:	Polyclonal
Conjugate:	This TSSC1 antibody is un-conjugated
Application:	Western Blotting (WB)

## Product Details

Immunogen:	This TSSC1 antibody is generated from rabbits immunized with a KLH conjugated synthetic peptide between 319-348 amino acids from the C-terminal region of human TSSC1.
Clone:	RB35883
Isotype:	Ig Fraction
Predicted Reactivity:	Pr, M, Rat
Purification:	This antibody is purified through a protein A column, followed by peptide affinity purification.

## Target Details

Target:	TSSC1
Alternative Name:	TSSC1 ( <a href="#">TSSC1 Products</a> )

## Target Details

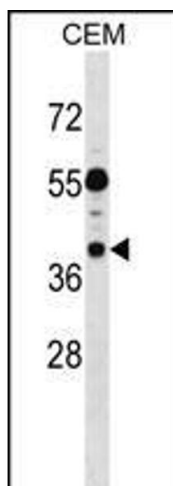
Background:	This gene has been reported in PMID 9403053 as one of several tumor-suppressing subtransferable fragments located in the imprinted gene domain of 11p15.5, an important tumor-suppressor gene region. Alterations in this region have been associated with the Beckwith-Wiedemann syndrome, Wilms tumor, rhabdomyosarcoma, adrenocortical carcinoma, and lung, ovarian, and breast cancer. Alignment of this gene to genomic sequence data suggests that this gene resides on chromosome 2 rather than chromosome 11. [provided by RefSeq].
Molecular Weight:	43603
Gene ID:	7260
NCBI Accession:	<a href="#">NP_003301</a>
UniProt:	<a href="#">Q53HC9</a>

## Application Details

Application Notes:	WB: 1:1000
Restrictions:	For Research Use only

## Handling

Format:	Liquid
Buffer:	Purified polyclonal antibody supplied in PBS with 0.09 % (W/V) sodium azide.
Preservative:	Sodium azide
Precaution of Use:	This product contains Sodium azide: a POISONOUS AND HAZARDOUS SUBSTANCE which should be handled by trained staff only.
Storage:	4 °C, -20 °C
Storage Comment:	TSSC1 Antibody (C-term) can be refrigerated at 2-8 °C for up to 6 months. For long term storage, keep at -20 °C.
Expiry Date:	6 months



#### Western Blotting

**Image 1.** TSSC1 Antibody (C-term) (ABIN1537126 and ABIN2848576) western blot analysis in CEM cell line lysates (35 µg/lane). This demonstrates the TSSC1 antibody detected the TSSC1 protein (arrow).