

Datasheet for ABIN1537137
anti-CCBL1 antibody (C-Term)[Go to Product page](#)

1 Image

Overview

Quantity:	400 µL
Target:	CCBL1
Binding Specificity:	AA 327-355, C-Term
Reactivity:	Human
Host:	Rabbit
Clonality:	Polyclonal
Conjugate:	This CCBL1 antibody is un-conjugated
Application:	Western Blotting (WB)

Product Details

Immunogen:	This CCBL1 antibody is generated from rabbits immunized with a KLH conjugated synthetic peptide between 327-355 amino acids from the C-terminal region of human CCBL1.
Clone:	RB38444
Isotype:	Ig Fraction
Purification:	This antibody is purified through a protein A column, followed by peptide affinity purification.

Target Details

Target:	CCBL1
Alternative Name:	CCBL1 (CCBL1 Products)
Background:	This gene encodes a cytosolic enzyme that is responsible for the metabolism of cysteine

Target Details

conjugates of certain halogenated alkenes and alkanes. This metabolism can form reactive metabolites leading to nephrotoxicity and neurotoxicity. Increased levels of this enzyme have been linked to schizophrenia. Multiple transcript variants that encode different isoforms have been identified for this gene.

Molecular Weight: 47875

Gene ID: 883

NCBI Accession: [NP_001116143](#), [NP_001116144](#), [NP_004050](#)

UniProt: [Q16773](#)

Application Details

Application Notes: WB: 1:1000

Restrictions: For Research Use only

Handling

Format: Liquid

Buffer: Purified polyclonal antibody supplied in PBS with 0.09 % (W/V) sodium azide.

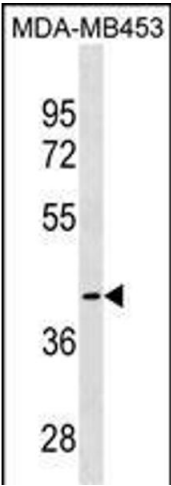
Preservative: Sodium azide

Precaution of Use: This product contains Sodium azide: a POISONOUS AND HAZARDOUS SUBSTANCE which should be handled by trained staff only.

Storage: 4 °C, -20 °C

Storage Comment: CCBL1 Antibody (C-term) can be refrigerated at 2-8 °C for up to 6 months. For long term storage, keep at -20 °C.

Expiry Date: 6 months



Western Blotting

Image 1. CCBL1 Antibody (C-term) (ABIN1537137 and ABIN2849997) western blot analysis in MDA-M cell line lysates (35 µg/lane). This demonstrates the CCBL1 antibody detected the CCBL1 protein (arrow).