



[Go to Product page](#)

Datasheet for ABIN1537143  
**anti-SUGT1 antibody (C-Term)**

1 Image

Overview

Quantity:	400 µL
Target:	SUGT1
Binding Specificity:	AA 330-356, C-Term
Reactivity:	Human
Host:	Rabbit
Clonality:	Polyclonal
Conjugate:	This SUGT1 antibody is un-conjugated
Application:	Western Blotting (WB)

Product Details

Immunogen:	This SUGT1 antibody is generated from rabbits immunized with a KLH conjugated synthetic peptide between 330-356 amino acids from the C-terminal region of human SUGT1.
Clone:	RB38623
Isotype:	Ig Fraction
Predicted Reactivity:	B, M, Rat
Purification:	This antibody is purified through a protein A column, followed by peptide affinity purification.

Target Details

Target:	SUGT1
Alternative Name:	SUGT1 ( <a href="#">SUGT1 Products</a> )

## Target Details

---

Background:	This gene is homologous to the yeast gene SGT1, which encodes a protein involved in kinetochore function and required for the G1/S and G2/M transitions. Complementation studies suggest that the human protein has similar functions. Two transcript variants encoding different isoforms have been found for this gene.
Molecular Weight:	41024
Gene ID:	10910
NCBI Accession:	<a href="#">NP_001124384</a> , <a href="#">NP_006695</a>
UniProt:	<a href="#">Q9Y2Z0</a>

## Application Details

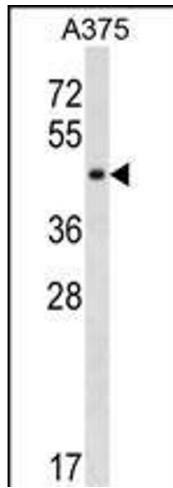
---

Application Notes:	WB: 1:1000
Restrictions:	For Research Use only

## Handling

---

Format:	Liquid
Buffer:	Purified polyclonal antibody supplied in PBS with 0.09 % (W/V) sodium azide.
Preservative:	Sodium azide
Precaution of Use:	This product contains Sodium azide: a POISONOUS AND HAZARDOUS SUBSTANCE which should be handled by trained staff only.
Storage:	4 °C,-20 °C
Storage Comment:	SUGT1 Antibody (C-term) can be refrigerated at 2-8 °C for up to 6 months. For long term storage, keep at -20 °C.
Expiry Date:	6 months



### Western Blotting

**Image 1.** SUGT1 Antibody (C-term) (ABIN1537143 and ABIN2850187) western blot analysis in cell line lysates (35 µg/lane). This demonstrates the SUGT1 antibody detected the SUGT1 protein (arrow).