



[Go to Product page](#)

Datasheet for ABIN1537153
anti-ENTPD5 antibody (C-Term)

1 Image

Overview

Quantity:	400 µL
Target:	ENTPD5
Binding Specificity:	AA 333-362, C-Term
Reactivity:	Human
Host:	Rabbit
Clonality:	Polyclonal
Conjugate:	This ENTPD5 antibody is un-conjugated
Application:	Western Blotting (WB)

Product Details

Immunogen:	This ENTPD5 antibody is generated from rabbits immunized with a KLH conjugated synthetic peptide between 333-362 amino acids from the C-terminal region of human ENTPD5.
Clone:	RB39795
Isotype:	Ig Fraction
Purification:	This antibody is purified through a protein A column, followed by peptide affinity purification.

Target Details

Target:	ENTPD5
Alternative Name:	ENTPD5 (ENTPD5 Products)
Background:	The protein encoded by this gene is similar to E-type nucleotidases (NTPases)/ecto-

Target Details

ATPase/apyrases. NTPases, such as CD39, mediate catabolism of extracellular nucleotides. ENTPD5 contains 4 apyrase-conserved regions which is characteristic of NTPases.

Molecular Weight: 47517

Gene ID: 957

NCBI Accession: [NP_001240](#)

UniProt: [O75356](#)

Application Details

Application Notes: WB: 1:1000

Restrictions: For Research Use only

Handling

Format: Liquid

Buffer: Purified polyclonal antibody supplied in PBS with 0.09 % (W/V) sodium azide.

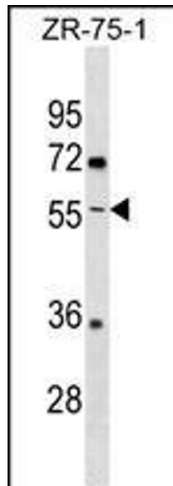
Preservative: Sodium azide

Precaution of Use: This product contains Sodium azide: a POISONOUS AND HAZARDOUS SUBSTANCE which should be handled by trained staff only.

Storage: 4 °C, -20 °C

Storage Comment: ENTPD5 Antibody (C-term) can be refrigerated at 2-8 °C for up to 6 months. For long term storage, keep at -20 °C.

Expiry Date: 6 months



Western Blotting

Image 1. ENTPD5 Antibody (C-term) (ABIN1537153 and ABIN2838297) western blot analysis in ZR-75-1 cell line lysates (35 µg/lane). This demonstrates the ENTPD5 antibody detected the ENTPD5 protein (arrow).