

Datasheet for ABIN1537154
anti-CERS6 antibody (C-Term)[Go to Product page](#)

1 Image

Overview

Quantity:	400 µL
Target:	CERS6
Binding Specificity:	AA 335-361, C-Term
Reactivity:	Human
Host:	Rabbit
Clonality:	Polyclonal
Conjugate:	This CERS6 antibody is un-conjugated
Application:	Western Blotting (WB)

Product Details

Immunogen:	This LASS6 antibody is generated from rabbits immunized with a KLH conjugated synthetic peptide between 335-361 amino acids from the C-terminal region of human LASS6.
Clone:	RB37704
Isotype:	Ig Fraction
Purification:	This antibody is purified through a protein A column, followed by peptide affinity purification.

Target Details

Target:	CERS6
Alternative Name:	LASS6 (CERS6 Products)
Background:	LASS6 may be involved in sphingolipid synthesis or its regulation (By similarity).

Target Details

Molecular Weight:	44890
Gene ID:	253782
NCBI Accession:	NP_001243055 , NP_982288
UniProt:	Q6ZMG9

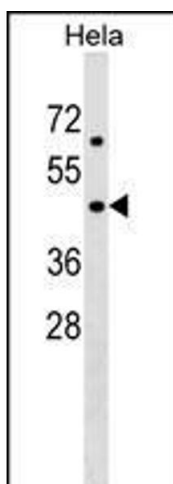
Application Details

Application Notes:	WB: 1:1000
Restrictions:	For Research Use only

Handling

Format:	Liquid
Buffer:	Purified polyclonal antibody supplied in PBS with 0.09 % (W/V) sodium azide.
Preservative:	Sodium azide
Precaution of Use:	This product contains Sodium azide: a POISONOUS AND HAZARDOUS SUBSTANCE which should be handled by trained staff only.
Storage:	4 °C, -20 °C
Storage Comment:	LASS6 Antibody (C-term) can be refrigerated at 2-8 °C for up to 6 months. For long term storage, keep at -20 °C.
Expiry Date:	6 months

Images



Western Blotting

Image 1. LASS6 Antibody (C-term) (ABIN1537154 and ABIN2849267) western blot analysis in HeLa cell line lysates (35 µg/lane). This demonstrates the LASS6 antibody detected the LASS6 protein (arrow).