

Datasheet for ABIN1537155
anti-ERGIC2 antibody (C-Term)



[Go to Product page](#)

1 Image

Overview

Quantity:	400 µL
Target:	ERGIC2
Binding Specificity:	AA 335-362, C-Term
Reactivity:	Human
Host:	Rabbit
Clonality:	Polyclonal
Conjugate:	This ERGIC2 antibody is un-conjugated
Application:	Western Blotting (WB)

Product Details

Immunogen:	This ERGIC2 antibody is generated from rabbits immunized with a KLH conjugated synthetic peptide between 335-362 amino acids from the C-terminal region of human ERGIC2.
Clone:	RB36524
Isotype:	Ig Fraction
Predicted Reactivity:	Pr
Purification:	This antibody is purified through a protein A column, followed by peptide affinity purification.

Target Details

Target:	ERGIC2
Alternative Name:	ERGIC2 (ERGIC2 Products)

Target Details

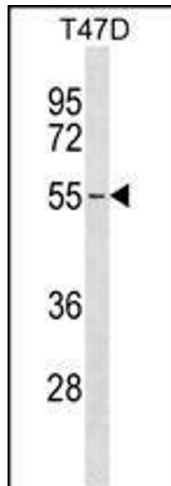
Background:	ERGIC2, or PTX1, is a ubiquitously expressed nuclear protein that is downregulated in prostate carcinoma (Kwok et al., 2001 [PubMed 11445006]).
Molecular Weight:	42549
Gene ID:	51290
NCBI Accession:	NP_057654
UniProt:	Q96RQ1

Application Details

Application Notes:	WB: 1:1000
Restrictions:	For Research Use only

Handling

Format:	Liquid
Buffer:	Purified polyclonal antibody supplied in PBS with 0.09 % (W/V) sodium azide.
Preservative:	Sodium azide
Precaution of Use:	This product contains Sodium azide: a POISONOUS AND HAZARDOUS SUBSTANCE which should be handled by trained staff only.
Storage:	4 °C,-20 °C
Storage Comment:	ERGIC2 Antibody (C-term) can be refrigerated at 2-8 °C for up to 6 months. For long term storage, keep at -20 °C.
Expiry Date:	6 months



Western Blotting

Image 1. ERGIC2 Antibody (C-term) (ABIN1537155 and ABIN2848453) western blot analysis in T47D cell line lysates (35 µg/lane). This demonstrates the ERGIC2 antibody detected the ERGIC2 protein (arrow).