

Datasheet for ABIN1537168  
**anti-MTL5 antibody (C-Term)**[Go to Product page](#)

## 1 Image

## Overview

Quantity:	400 µL
Target:	MTL5
Binding Specificity:	AA 341-368, C-Term
Reactivity:	Human
Host:	Rabbit
Clonality:	Polyclonal
Conjugate:	This MTL5 antibody is un-conjugated
Application:	Western Blotting (WB)

## Product Details

Immunogen:	This MTL5 antibody is generated from rabbits immunized with a KLH conjugated synthetic peptide between 341-368 amino acids from the C-terminal region of human MTL5.
Clone:	RB38308
Isotype:	Ig Fraction
Purification:	This antibody is purified through a protein A column, followed by peptide affinity purification.

## Target Details

Target:	MTL5
Alternative Name:	MTL5 ( <a href="#">MTL5 Products</a> )
Background:	Metallothionein proteins are highly conserved low-molecular-weight cysteine-rich proteins that

## Target Details

are induced by and bind to heavy metal ions and have no enzymatic activity. They may play a central role in the regulation of cell growth and differentiation and are involved in spermatogenesis. This gene encodes a metallothionein-like protein which has been shown to be expressed differentially in mouse testis and ovary. Two transcript variants encoding different isoforms have been found for this gene.

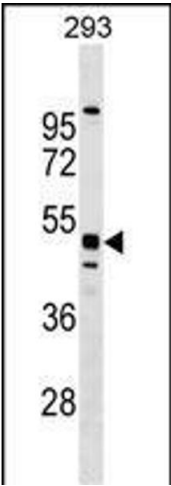
Molecular Weight:	55025
Gene ID:	9633
NCBI Accession:	<a href="#">NP_001034745</a> , <a href="#">NP_004914</a>
UniProt:	<a href="#">Q9Y4I5</a>

## Application Details

Application Notes:	WB: 1:1000
Restrictions:	For Research Use only

## Handling

Format:	Liquid
Buffer:	Purified polyclonal antibody supplied in PBS with 0.09 % (W/V) sodium azide.
Preservative:	Sodium azide
Precaution of Use:	This product contains Sodium azide: a POISONOUS AND HAZARDOUS SUBSTANCE which should be handled by trained staff only.
Storage:	4 °C,-20 °C
Storage Comment:	MTL5 Antibody (C-term) can be refrigerated at 2-8 °C for up to 6 months. For long term storage, keep at -20 °C.
Expiry Date:	6 months



Western Blotting

**Image 1.** MTL5 Antibody (C-term) (ABIN1537168 and ABIN2849603) western blot analysis in 293 cell line lysates (35 µg/lane). This demonstrates the MTL5 antibody detected the MTL5 protein (arrow).