

Datasheet for ABIN1537169  
**anti-HHCM antibody (C-Term)**[Go to Product page](#)

## 1 Image

## Overview

Quantity:	400 µL
Target:	HHCM
Binding Specificity:	AA 341-368, C-Term
Reactivity:	Human
Host:	Rabbit
Clonality:	Polyclonal
Conjugate:	This HHCM antibody is un-conjugated
Application:	Western Blotting (WB)

## Product Details

Immunogen:	This HHCM antibody is generated from rabbits immunized with a KLH conjugated synthetic peptide between 341-368 amino acids from the C-terminal region of human HHCM.
Clone:	RB30468
Isotype:	Ig Fraction
Purification:	This antibody is purified through a protein A column, followed by peptide affinity purification.

## Target Details

Target:	HHCM
Alternative Name:	HHCM ( <a href="#">HHCM Products</a> )
Background:	The function of this protein remains unknown.

## Target Details

Gene ID: 10639

UniProt: [Q05877](#)

## Application Details

Application Notes: WB: 1:1000

Restrictions: For Research Use only

## Handling

Format: Liquid

Buffer: Purified polyclonal antibody supplied in PBS with 0.09 % (W/V) sodium azide.

Preservative: Sodium azide

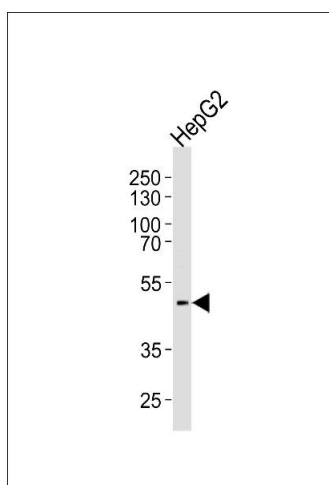
Precaution of Use: This product contains Sodium azide: a POISONOUS AND HAZARDOUS SUBSTANCE which should be handled by trained staff only.

Storage: 4 °C, -20 °C

Storage Comment: HHCM Antibody (C-term) can be refrigerated at 2-8 °C for up to 6 months. For long term storage, keep at -20 °C.

Expiry Date: 6 months

## Images



### Western Blotting

**Image 1.** Western blot analysis of lysate from HepG2 cell line, using HHCM Antibody (C-term) (ABIN1537169 and ABIN2850047). (ABIN1537169 and ABIN2850047) was diluted at 1:1000 at each lane. A goat anti-rabbit IgG H&L(HRP) at 1:5000 dilution was used as the secondary antibody. Lysate at 35 µg per lane.