



Datasheet for ABIN1537171
anti-KLHDC7B antibody (C-Term)



[Go to Product page](#)

1 Image

Overview

Quantity:	400 µL
Target:	KLHDC7B
Binding Specificity:	AA 442-471, C-Term
Reactivity:	Human
Host:	Rabbit
Clonality:	Polyclonal
Conjugate:	This KLHDC7B antibody is un-conjugated
Application:	Western Blotting (WB)

Product Details

Immunogen:	This KLHDC7B antibody is generated from rabbits immunized with a KLH conjugated synthetic peptide between 442-471 amino acids from the C-terminal region of human KLHDC7B.
Clone:	RB40221
Isotype:	Ig Fraction
Purification:	This antibody is purified through a protein A column, followed by peptide affinity purification.

Target Details

Target:	KLHDC7B
Alternative Name:	KLHDC7B (KLHDC7B Products)
Background:	The function of this protein remains unknown.

Target Details

Molecular Weight:	63314
Gene ID:	113730
NCBI Accession:	NP_612442
UniProt:	Q96G42

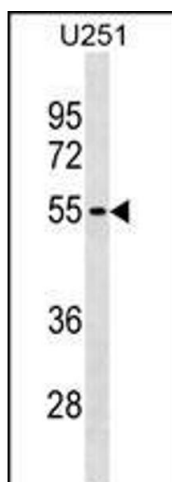
Application Details

Application Notes:	WB: 1:1000
Restrictions:	For Research Use only

Handling

Format:	Liquid
Buffer:	Purified polyclonal antibody supplied in PBS with 0.09 % (W/V) sodium azide.
Preservative:	Sodium azide
Precaution of Use:	This product contains Sodium azide: a POISONOUS AND HAZARDOUS SUBSTANCE which should be handled by trained staff only.
Storage:	4 °C, -20 °C
Storage Comment:	KLHDC7B Antibody (C-term) can be refrigerated at 2-8 °C for up to 6 months. For long term storage, keep at -20 °C.
Expiry Date:	6 months

Images



Western Blotting

Image 1. KLHDC7B Antibody (C-term) (ABIN1537171 and ABIN2838249) western blot analysis in cell line lysates (35 μ g/lane). This demonstrates the KLHDC7B antibody detected the KLHDC7B protein (arrow).