

Datasheet for ABIN1537174  
**anti-P2RX1 antibody (C-Term)**[Go to Product page](#)

## 1 Image

## Overview

Quantity:	400 µL
Target:	P2RX1
Binding Specificity:	AA 345-372, C-Term
Reactivity:	Human
Host:	Rabbit
Clonality:	Polyclonal
Conjugate:	This P2RX1 antibody is un-conjugated
Application:	Western Blotting (WB)

## Product Details

Immunogen:	This P2RX1 antibody is generated from rabbits immunized with a KLH conjugated synthetic peptide between 345-372 amino acids from the C-terminal region of human P2RX1.
Clone:	RB36282
Isotype:	Ig Fraction
Predicted Reactivity:	M, Rat
Purification:	This antibody is purified through a protein A column, followed by peptide affinity purification.

## Target Details

Target:	P2RX1
Alternative Name:	P2RX1 ( <a href="#">P2RX1 Products</a> )

## Target Details

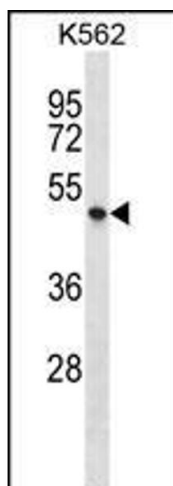
Background:	The product of this gene belongs to the family of purinoceptors for ATP. This receptor functions as a ligand-gated ion channel with relatively high calcium permeability. Binding to ATP mediates synaptic transmission between neurons and from neurons to smooth muscle, being responsible, for example, for sympathetic vasoconstriction in small arteries, arterioles and vas deferens. Mouse studies suggest that this receptor is essential for normal male reproductive function. It is possible that the development of selective antagonists for this receptor may provide an effective non-hormonal male contraceptive pill.
Molecular Weight:	44980
Gene ID:	5023
NCBI Accession:	<a href="#">NP_002549</a>
UniProt:	<a href="#">P51575</a>
Pathways:	<a href="#">Positive Regulation of Endopeptidase Activity</a>

## Application Details

Application Notes:	WB: 1:1000
Restrictions:	For Research Use only

## Handling

Format:	Liquid
Buffer:	Purified polyclonal antibody supplied in PBS with 0.09 % (W/V) sodium azide.
Preservative:	Sodium azide
Precaution of Use:	This product contains Sodium azide: a POISONOUS AND HAZARDOUS SUBSTANCE which should be handled by trained staff only.
Storage:	4 °C,-20 °C
Storage Comment:	P2RX1 Antibody (C-term) can be refrigerated at 2-8 °C for up to 6 months. For long term storage, keep at -20 °C.
Expiry Date:	6 months



#### Western Blotting

**Image 1.** P2RX1 Antibody (C-term) (ABIN1537174 and ABIN2848490) western blot analysis in K562 cell line lysates (35 µg/lane). This demonstrates the P2RX1 antibody detected the P2RX1 protein (arrow).