



[Go to Product page](#)

Datasheet for ABIN1537175  
**anti-TRAM1 antibody (C-Term)**

1 Image

Overview

Quantity:	400 µL
Target:	TRAM1
Binding Specificity:	AA 346-372, C-Term
Reactivity:	Human
Host:	Rabbit
Clonality:	Polyclonal
Conjugate:	This TRAM1 antibody is un-conjugated
Application:	Western Blotting (WB)

Product Details

Immunogen:	This TRAM1 antibody is generated from rabbits immunized with a KLH conjugated synthetic peptide between 346-372 amino acids from the C-terminal region of human TRAM1.
Clone:	RB37477
Isotype:	Ig Fraction
Purification:	This antibody is purified through a protein A column, followed by peptide affinity purification.

Target Details

Target:	TRAM1
Alternative Name:	TRAM1 ( <a href="#">TRAM1 Products</a> )
Background:	This gene encodes a multi-pass membrane protein that is part of the mammalian endoplasmic

## Target Details

---

reticulum. The encoded protein influences glycosylation and facilitates the translocation of secretory proteins across the endoplasmic reticulum membrane by regulating which domains of the nascent polypeptide chain are visible to the cytosol during a translocational pause. [provided by RefSeq].

Molecular Weight: 43072

Gene ID: 23471

NCBI Accession: [NP\\_055109](#)

UniProt: [Q15629](#)

## Application Details

---

Application Notes: WB: 1:1000

Restrictions: For Research Use only

## Handling

---

Format: Liquid

Buffer: Purified polyclonal antibody supplied in PBS with 0.09 % (W/V) sodium azide.

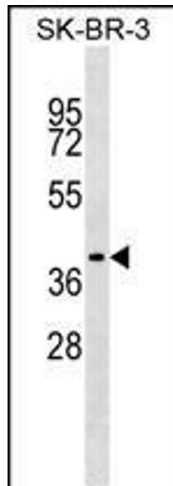
Preservative: Sodium azide

Precaution of Use: This product contains Sodium azide: a POISONOUS AND HAZARDOUS SUBSTANCE which should be handled by trained staff only.

Storage: 4 °C,-20 °C

Storage Comment: TRAM1 Antibody (C-term) can be refrigerated at 2-8 °C for up to 6 months. For long term storage, keep at -20 °C.

Expiry Date: 6 months



### Western Blotting

**Image 1.** TR Antibody (C-term) (ABIN1537175 and ABIN2849350) western blot analysis in SK-BR-3 cell line lysates (35 µg/lane). This demonstrates the TR antibody detected the TR protein (arrow).