

Datasheet for ABIN1537180  
**anti-SNX30 antibody (C-Term)**[Go to Product page](#)

## 2 Images

## Overview

Quantity:	400 µL
Target:	SNX30
Binding Specificity:	AA 346-374, C-Term
Reactivity:	Human, Mouse
Host:	Rabbit
Clonality:	Polyclonal
Conjugate:	This SNX30 antibody is un-conjugated
Application:	Western Blotting (WB)

## Product Details

Immunogen:	This SNX30 antibody is generated from rabbits immunized with a KLH conjugated synthetic peptide between 346-374 amino acids from the C-terminal region of human SNX30.
Clone:	RB38436
Isotype:	Ig Fraction
Purification:	This antibody is purified through a protein A column, followed by peptide affinity purification.

## Target Details

Target:	SNX30
Alternative Name:	SNX30 ( <a href="#">SNX30 Products</a> )
Background:	SNX30 may be involved in several stages of intracellular trafficking (By similarity).

## Target Details

Molecular Weight:	49677
Gene ID:	401548
NCBI Accession:	<a href="#">NP_001013012</a>
UniProt:	<a href="#">Q5VWJ9</a>

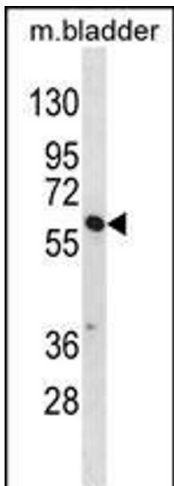
## Application Details

Application Notes:	WB: 1:1000. WB: 1:1000
Restrictions:	For Research Use only

## Handling

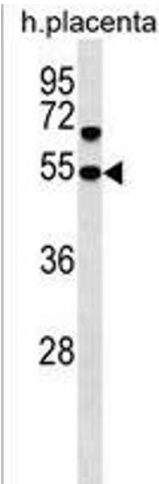
Format:	Liquid
Buffer:	Purified polyclonal antibody supplied in PBS with 0.09 % (W/V) sodium azide.
Preservative:	Sodium azide
Precaution of Use:	This product contains Sodium azide: a POISONOUS AND HAZARDOUS SUBSTANCE which should be handled by trained staff only.
Storage:	4 °C, -20 °C
Storage Comment:	SNX30 Antibody (C-term) can be refrigerated at 2-8 °C for up to 6 months. For long term storage, keep at -20 °C.
Expiry Date:	6 months

## Images



### Western Blotting

**Image 1.** SNX30 Antibody (C-term) (ABIN1537180 and ABIN2849996) western blot analysis in mouse bladder tissue lysates (35 µg/lane). This demonstrates the SNX30 antibody detected the SNX30 protein (arrow).



Western Blotting

**Image 2.** SNX30 Antibody (C-term) (ABIN1537180 and ABIN2849996) western blot analysis in human placenta tissue lysates (35 µg/lane). This demonstrates the SNX30 antibody detected the SNX30 protein (arrow).