

Datasheet for ABIN1537201
anti-AMY1A antibody (C-Term)[Go to Product page](#)

1 Image

Overview

Quantity:	400 µL
Target:	AMY1A
Binding Specificity:	AA 359-388, C-Term
Reactivity:	Human
Host:	Rabbit
Clonality:	Polyclonal
Conjugate:	This AMY1A antibody is un-conjugated
Application:	Western Blotting (WB)

Product Details

Immunogen:	This AMY1A antibody is generated from rabbits immunized with a KLH conjugated synthetic peptide between 359-388 amino acids from the C-terminal region of human AMY1A.
Clone:	RB36733
Isotype:	Ig Fraction
Purification:	This antibody is purified through a protein A column, followed by peptide affinity purification.

Target Details

Target:	AMY1A
Alternative Name:	AMY1A (AMY1A Products)
Background:	Amylases are secreted proteins that hydrolyze 1,4-alpha-glucoside bonds in oligosaccharides

Target Details

and polysaccharides, and thus catalyze the first step in digestion of dietary starch and glycogen. The human genome has a cluster of several amylase genes that are expressed at high levels in either salivary gland or pancreas. This gene encodes an amylase isoenzyme produced by the salivary gland. Alternative splicing results in multiple transcript variants encoding the same protein.

Molecular Weight: 57768

Gene ID: 278, 276, 277

NCBI Accession: [NP_001008219](#), [NP_001008220](#), [NP_001008222](#), [NP_004029](#)

UniProt: [P04745](#)

Application Details

Application Notes: WB: 1:1000

Restrictions: For Research Use only

Handling

Format: Liquid

Buffer: Purified polyclonal antibody supplied in PBS with 0.09 % (W/V) sodium azide.

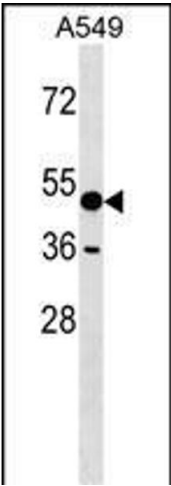
Preservative: Sodium azide

Precaution of Use: This product contains Sodium azide: a POISONOUS AND HAZARDOUS SUBSTANCE which should be handled by trained staff only.

Storage: 4 °C, -20 °C

Storage Comment: AMY1A Antibody (C-term) can be refrigerated at 2-8 °C for up to 6 months. For long term storage, keep at -20 °C.

Expiry Date: 6 months



Western Blotting

Image 1. Y1A Antibody (C-term) (ABIN1537201 and ABIN2849152) western blot analysis in A549 cell line lysates (35 µg/lane). This demonstrates the Y1A antibody detected the Y1A protein (arrow).