

Datasheet for ABIN1537204  
**anti-FCRL1 antibody (C-Term)**[Go to Product page](#)

## 1 Image

## Overview

Quantity:	400 µL
Target:	FCRL1
Binding Specificity:	AA 366-392, C-Term
Reactivity:	Human
Host:	Rabbit
Clonality:	Polyclonal
Conjugate:	This FCRL1 antibody is un-conjugated
Application:	Western Blotting (WB)

## Product Details

Immunogen:	This FCRL1 antibody is generated from rabbits immunized with a KLH conjugated synthetic peptide between 366-392 amino acids from the C-terminal region of human FCRL1.
Clone:	RB38771
Isotype:	Ig Fraction
Purification:	This antibody is purified through a protein A column, followed by peptide affinity purification.

## Target Details

Target:	FCRL1
Alternative Name:	FCRL1 ( <a href="#">FCRL1 Products</a> )
Background:	This gene encodes a member of the immunoglobulin receptor superfamily and is one of several

## Target Details

Fc receptor-like glycoproteins clustered on the long arm of chromosome 1. The encoded protein contains three extracellular C2-like immunoglobulin domains, a transmembrane domain and a cytoplasmic domain with two immunoreceptor-tyrosine activation motifs. This protein may play a role in the regulation of cancer cell growth. Alternative splicing results in multiple transcript variants.

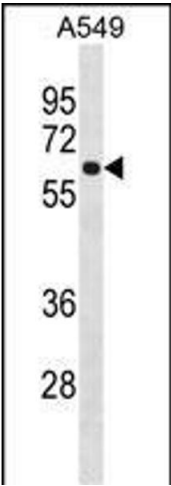
Molecular Weight:	46936
Gene ID:	115350
NCBI Accession:	<a href="#">NP_001152869</a> , <a href="#">NP_001152870</a> , <a href="#">NP_443170</a>
UniProt:	<a href="#">Q96LA6</a>

## Application Details

Application Notes:	WB: 1:1000
Restrictions:	For Research Use only

## Handling

Format:	Liquid
Buffer:	Purified polyclonal antibody supplied in PBS with 0.09 % (W/V) sodium azide.
Preservative:	Sodium azide
Precaution of Use:	This product contains Sodium azide: a POISONOUS AND HAZARDOUS SUBSTANCE which should be handled by trained staff only.
Storage:	4 °C,-20 °C
Storage Comment:	FCRL1 Antibody (C-term) can be refrigerated at 2-8 °C for up to 6 months. For long term storage, keep at -20 °C.
Expiry Date:	6 months



Western Blotting

**Image 1.** FCRL1 Antibody (C-term) (ABIN1537204 and ABIN2849932) western blot analysis in A549 cell line lysates (35 µg/lane). This demonstrates the FCRL1 Antibody detected the FCRL1 protein (arrow).