

Datasheet for ABIN1537207
anti-LAX1 antibody (C-Term)



[Go to Product page](#)

1 Image

Overview

Quantity:	400 µL
Target:	LAX1
Binding Specificity:	AA 369-398, C-Term
Reactivity:	Human
Host:	Rabbit
Clonality:	Polyclonal
Conjugate:	This LAX1 antibody is un-conjugated
Application:	Western Blotting (WB)

Product Details

Immunogen:	This LAX1 antibody is generated from rabbits immunized with a KLH conjugated synthetic peptide between 369-398 amino acids from the C-terminal region of human LAX1.
Clone:	RB37336
Isotype:	Ig Fraction
Purification:	This antibody is purified through a protein A column, followed by peptide affinity purification.

Target Details

Target:	LAX1
Alternative Name:	LAX1 (LAX1 Products)
Background:	LAX1 negatively regulates TCR (T-cell antigen receptor)-mediated signaling in T-cells and BCR

Target Details

(B-cell antigen receptor)-mediated signaling in B-cells.

Molecular Weight: 44085

Gene ID: 54900

NCBI Accession: [NP_001129662](#), [NP_060243](#)

UniProt: [Q8IWW1](#)

Pathways: [Production of Molecular Mediator of Immune Response](#)

Application Details

Application Notes: WB: 1:1000

Restrictions: For Research Use only

Handling

Format: Liquid

Buffer: Purified polyclonal antibody supplied in PBS with 0.09 % (W/V) sodium azide.

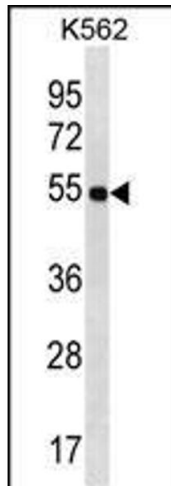
Preservative: Sodium azide

Precaution of Use: This product contains Sodium azide: a POISONOUS AND HAZARDOUS SUBSTANCE which should be handled by trained staff only.

Storage: 4 °C,-20 °C

Storage Comment: LAX1 Antibody (C-term) can be refrigerated at 2-8 °C for up to 6 months. For long term storage, keep at -20 °C.

Expiry Date: 6 months



Western Blotting

Image 1. LAX1 Antibody (C-term) (ABIN1537207 and ABIN2850101) western blot analysis in K562 cell line lysates (35 µg/lane). This demonstrates the LAX1 antibody detected the LAX1 protein (arrow).