

Datasheet for ABIN1537213
anti-ABTB1 antibody (C-Term)[Go to Product page](#)

1 Image

Overview

Quantity:	400 µL
Target:	ABTB1
Binding Specificity:	AA 371-398, C-Term
Reactivity:	Human
Host:	Rabbit
Clonality:	Polyclonal
Conjugate:	This ABTB1 antibody is un-conjugated
Application:	Western Blotting (WB)

Product Details

Immunogen:	This ABTB1 antibody is generated from rabbits immunized with a KLH conjugated synthetic peptide between 371-398 amino acids from the C-terminal region of human ABTB1.
Clone:	RB37293
Isotype:	Ig Fraction
Purification:	This antibody is purified through a protein A column, followed by peptide affinity purification.

Target Details

Target:	ABTB1
Alternative Name:	ABTB1 (ABTB1 Products)
Background:	This gene encodes a protein with an ankyrin repeat region and two BTB/POZ domains, which

Target Details

are thought to be involved in protein-protein interactions. Expression of this gene is activated by the phosphatase and tensin homolog, a tumor suppressor. Alternate splicing results in three transcript variants. [provided by RefSeq].

Molecular Weight: 53979

Gene ID: 80325

NCBI Accession: [NP_115937](#), [NP_742024](#)

UniProt: [Q969K4](#)

Application Details

Application Notes: WB: 1:1000

Restrictions: For Research Use only

Handling

Format: Liquid

Buffer: Purified polyclonal antibody supplied in PBS with 0.09 % (W/V) sodium azide.

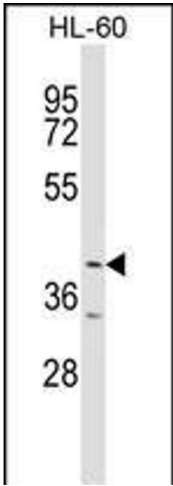
Preservative: Sodium azide

Precaution of Use: This product contains Sodium azide: a POISONOUS AND HAZARDOUS SUBSTANCE which should be handled by trained staff only.

Storage: 4 °C, -20 °C

Storage Comment: ABTB1 Antibody (C-term) can be refrigerated at 2-8 °C for up to 6 months. For long term storage, keep at -20 °C.

Expiry Date: 6 months



Western Blotting

Image 1. ABTB1 Antibody (C-term) (ABIN1537213 and ABIN2848912) western blot analysis in HL-60 cell line lysates (35 µg/lane). This demonstrates the ABTB1 antibody detected the ABTB1 protein (arrow).