



[Go to Product page](#)

Datasheet for ABIN1537220  
**anti-TULP3 antibody (C-Term)**

1 Image

Overview

Quantity:	400 µL
Target:	TULP3
Binding Specificity:	AA 374-400, C-Term
Reactivity:	Human
Host:	Rabbit
Clonality:	Polyclonal
Conjugate:	This TULP3 antibody is un-conjugated
Application:	Western Blotting (WB)

Product Details

Immunogen:	This TULP3 antibody is generated from rabbits immunized with a KLH conjugated synthetic peptide between 374-400 amino acids from the C-terminal region of human TULP3.
Clone:	RB39553
Isotype:	Ig Fraction
Purification:	This antibody is purified through a protein A column, followed by peptide affinity purification.

Target Details

Target:	TULP3
Alternative Name:	TULP3 ( <a href="#">TULP3 Products</a> )
Background:	This gene encodes a member of the tubby gene family of bipartite transcription factors.

## Target Details

---

Members of this family have been identified in plants, vertebrates, and invertebrates, and they share a conserved N-terminal transcription activation region and a conserved C-terminal DNA and phosphatidylinositol-phosphate binding region. The encoded protein binds to phosphoinositides in the plasma membrane via its C-terminal region and probably functions as a membrane-bound transcription regulator that translocates to the nucleus in response to phosphoinositide hydrolysis, for instance, induced by G-protein-coupled-receptor signaling. It plays an important role in neuronal development and function. Two transcript variants encoding distinct isoforms have been identified for this gene.

Molecular Weight:	49642
Gene ID:	7289
NCBI Accession:	<a href="#">NP_001153880</a> , <a href="#">NP_003315</a>
UniProt:	<a href="#">O75386</a>
Pathways:	<a href="#">Regulation of G-Protein Coupled Receptor Protein Signaling</a> , <a href="#">Tube Formation</a>

## Application Details

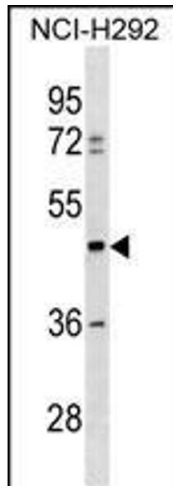
---

Application Notes:	WB: 1:1000
Restrictions:	For Research Use only

## Handling

---

Format:	Liquid
Buffer:	Purified polyclonal antibody supplied in PBS with 0.09 % (W/V) sodium azide.
Preservative:	Sodium azide
Precaution of Use:	This product contains Sodium azide: a POISONOUS AND HAZARDOUS SUBSTANCE which should be handled by trained staff only.
Storage:	4 °C, -20 °C
Storage Comment:	TULP3 Antibody (C-term) can be refrigerated at 2-8 °C for up to 6 months. For long term storage, keep at -20 °C.
Expiry Date:	6 months



### Western Blotting

**Image 1.** TULP3 Antibody (C-term) (ABIN1537220 and ABIN2850401) western blot analysis in NCI- cell line lysates (35 µg/lane). This demonstrates the TULP3 antibody detected the TULP3 protein (arrow).