

Datasheet for ABIN1537221  
**anti-SERPINI2 antibody (C-Term)**[Go to Product page](#)

## 1 Image

## Overview

Quantity:	400 µL
Target:	SERPINI2
Binding Specificity:	AA 375-401, C-Term
Reactivity:	Human
Host:	Rabbit
Clonality:	Polyclonal
Conjugate:	This SERPINI2 antibody is un-conjugated
Application:	Western Blotting (WB)

## Product Details

Immunogen:	This SERPINI2 antibody is generated from rabbits immunized with a KLH conjugated synthetic peptide between 375-401 amino acids from the C-terminal region of human SERPINI2.
Clone:	RB37465
Isotype:	Ig Fraction
Purification:	This antibody is purified through a protein A column, followed by peptide affinity purification.

## Target Details

Target:	SERPINI2
Alternative Name:	SERPINI2 ( <a href="#">SERPINI2 Products</a> )
Background:	The protein encoded by this gene is a member of the serine protease inhibitor (serpin)

## Target Details

superfamily made up of proteins which play central roles in the regulation of a wide variety of physiological processes, including coagulation, fibrinolysis, development, malignancy and inflammation. The gene product may have a role in a growth-control, possibly growth-suppressing pathway and, when impaired, may be involved in pancreatic carcinogenesis. The protein is a member of the plasminogen activator inhibitor-1 family, a subset of the serpin superfamily whose members act as tissue-specific tPA inhibitors. Two alternatively spliced transcript variants encoding distinct protein isoforms have been found for this gene.

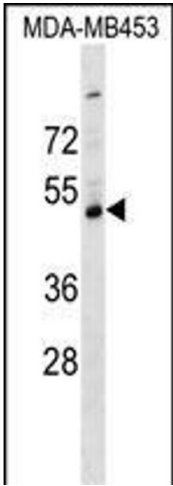
Molecular Weight:	46145
Gene ID:	5276
NCBI Accession:	<a href="#">NP_001012303</a> , <a href="#">NP_006208</a>
UniProt:	<a href="#">O75830</a>

## Application Details

Application Notes:	WB: 1:1000
Restrictions:	For Research Use only

## Handling

Format:	Liquid
Buffer:	Purified polyclonal antibody supplied in PBS with 0.09 % (W/V) sodium azide.
Preservative:	Sodium azide
Precaution of Use:	This product contains Sodium azide: a POISONOUS AND HAZARDOUS SUBSTANCE which should be handled by trained staff only.
Storage:	4 °C, -20 °C
Storage Comment:	SERPINI2 Antibody (C-term) can be refrigerated at 2-8 °C for up to 6 months. For long term storage, keep at -20 °C.
Expiry Date:	6 months



Western Blotting

**Image 1.** SERPINI2 Antibody (C-term) (ABIN1537221 and ABIN2849243) western blot analysis in MDA-M cell line lysates (35 µg/lane). This demonstrates the SERPINI2 antibody detected the SERPINI2 protein (arrow).