

Datasheet for ABIN1537223
anti-CORO1C antibody (C-Term)[Go to Product page](#)

1 Image

Overview

Quantity:	400 µL
Target:	CORO1C
Binding Specificity:	AA 377-403, C-Term
Reactivity:	Mouse
Host:	Rabbit
Clonality:	Polyclonal
Conjugate:	This CORO1C antibody is un-conjugated
Application:	Western Blotting (WB)

Product Details

Immunogen:	This CORO1C antibody is generated from rabbits immunized with a KLH conjugated synthetic peptide between 377-403 amino acids from the C-terminal region of human CORO1C.
Clone:	RB38586
Isotype:	Ig Fraction
Purification:	This antibody is purified through a protein A column, followed by peptide affinity purification.

Target Details

Target:	CORO1C
Alternative Name:	CORO1C (CORO1C Products)
Background:	This gene encodes a member of the WD repeat protein family. WD repeats are minimally

Target Details

conserved regions of approximately 40 amino acids typically bracketed by gly-his and trp-aspartate (GH-WD), which may facilitate formation of heterotrimeric or multiprotein complexes. Members of this family are involved in a variety of cellular processes, including cell cycle progression, signal transduction, apoptosis, and gene regulation.

Molecular Weight: 53249

Gene ID: 23603

NCBI Accession: [NP_001098707](#), [NP_001263400](#), [NP_0551140](#)

UniProt: [Q9ULV4](#)

Application Details

Application Notes: WB: 1:1000

Restrictions: For Research Use only

Handling

Format: Liquid

Buffer: Purified polyclonal antibody supplied in PBS with 0.09 % (W/V) sodium azide.

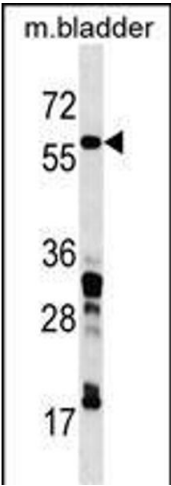
Preservative: Sodium azide

Precaution of Use: This product contains Sodium azide: a POISONOUS AND HAZARDOUS SUBSTANCE which should be handled by trained staff only.

Storage: 4 °C, -20 °C

Storage Comment: COR01C Antibody (C-term) can be refrigerated at 2-8 °C for up to 6 months. For long term storage, keep at -20 °C.

Expiry Date: 6 months



Western Blotting

Image 1. CORO1C Antibody (C-term) (ABIN1537223 and ABIN2850131) western blot analysis in mouse bladder tissue lysates (35 µg/lane). This demonstrates the CORO1C antibody detected the CORO1C protein (arrow).