

Datasheet for ABIN1537227
anti-SCG3 antibody (C-Term)



[Go to Product page](#)

1 Image

Overview

Quantity:	400 µL
Target:	SCG3
Binding Specificity:	AA 378-406, C-Term
Reactivity:	Human
Host:	Rabbit
Clonality:	Polyclonal
Conjugate:	This SCG3 antibody is un-conjugated
Application:	Western Blotting (WB)

Product Details

Immunogen:	This SCG3 antibody is generated from rabbits immunized with a KLH conjugated synthetic peptide between 378-406 amino acids from the C-terminal region of human SCG3.
Clone:	RB37551
Isotype:	Ig Fraction
Purification:	This antibody is purified through a protein A column, followed by peptide affinity purification.

Target Details

Target:	SCG3
Alternative Name:	SCG3 (SCG3 Products)
Background:	The protein encoded by this gene is a member of the chromogranin/secretogranin family of

Target Details

neuroendocrine secretory proteins. Granins may serve as precursors for biologically active peptides. Some granins have been shown to function as helper proteins in sorting and proteolytic processing of prohormones, however, the function of this protein is unknown. Two transcript variants encoding different isoforms have been found for this gene.

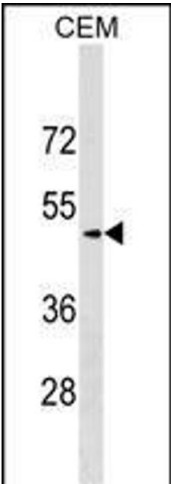
Molecular Weight:	53005
Gene ID:	29106
NCBI Accession:	NP_001158729 , NP_037375
UniProt:	Q8WXD2

Application Details

Application Notes:	WB: 1:1000
Restrictions:	For Research Use only

Handling

Format:	Liquid
Buffer:	Purified polyclonal antibody supplied in PBS with 0.09 % (W/V) sodium azide.
Preservative:	Sodium azide
Precaution of Use:	This product contains Sodium azide: a POISONOUS AND HAZARDOUS SUBSTANCE which should be handled by trained staff only.
Storage:	4 °C,-20 °C
Storage Comment:	SCG3 Antibody (C-term) can be refrigerated at 2-8 °C for up to 6 months. For long term storage, keep at -20 °C.
Expiry Date:	6 months



Western Blotting

Image 1. SCG3 Antibody (C-term) (ABIN1537227 and ABIN2849098) western blot analysis in CEM cell line lysates (35 µg/lane). This demonstrates the SCG3 antibody detected the SCG3 protein (arrow).