

Datasheet for ABIN1537228
anti-RGMB antibody (C-Term)[Go to Product page](#)

1 Image

Overview

Quantity:	400 µL
Target:	RGMB
Binding Specificity:	AA 380-407, C-Term
Reactivity:	Human
Host:	Rabbit
Clonality:	Polyclonal
Conjugate:	This RGMB antibody is un-conjugated
Application:	Western Blotting (WB)

Product Details

Immunogen:	This RGMB antibody is generated from rabbits immunized with a KLH conjugated synthetic peptide between 380-407 amino acids from the C-terminal region of human RGMB.
Clone:	RB37543
Isotype:	Ig Fraction
Predicted Reactivity:	M
Purification:	This antibody is purified through a protein A column, followed by peptide affinity purification.

Target Details

Target:	RGMB
Alternative Name:	RGMB (RGMB Products)

Target Details

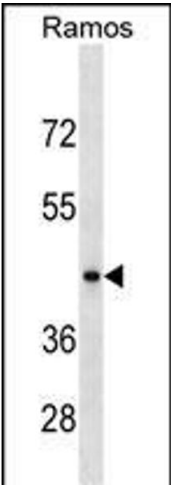
Background:	RGMB is a glycosylphosphatidylinositol (GPI)-anchored member of the repulsive guidance molecule family (see RGMA, MIM 607362) and contributes to the patterning of the developing nervous system (Samad et al., 2005 [PubMed 15671031]).
Molecular Weight:	47547
Gene ID:	285704
NCBI Accession:	NP_001012779
UniProt:	Q6NW40

Application Details

Application Notes:	WB: 1:1000
Restrictions:	For Research Use only

Handling

Format:	Liquid
Buffer:	Purified polyclonal antibody supplied in PBS with 0.09 % (W/V) sodium azide.
Preservative:	Sodium azide
Precaution of Use:	This product contains Sodium azide: a POISONOUS AND HAZARDOUS SUBSTANCE which should be handled by trained staff only.
Storage:	4 °C, -20 °C
Storage Comment:	RGMB Antibody (C-term) can be refrigerated at 2-8 °C for up to 6 months. For long term storage, keep at -20 °C.
Expiry Date:	6 months



Western Blotting

Image 1. RGMB Antibody (C-term) (ABIN1537228 and ABIN2849095) western blot analysis in Ramos cell line lysates (35 µg/lane). This demonstrates the RGMB antibody detected the RGMB protein (arrow).