



[Go to Product page](#)

Datasheet for ABIN1537231
anti-GCHFR antibody (C-Term)

1 Image

Overview

Quantity:	400 µL
Target:	GCHFR
Binding Specificity:	AA 38-66, C-Term
Reactivity:	Human
Host:	Rabbit
Clonality:	Polyclonal
Conjugate:	This GCHFR antibody is un-conjugated
Application:	Western Blotting (WB)

Product Details

Immunogen:	This GCHFR antibody is generated from rabbits immunized with a KLH conjugated synthetic peptide between 38-66 amino acids from the C-terminal region of human GCHFR.
Clone:	RB39199
Isotype:	Ig Fraction
Predicted Reactivity:	B
Purification:	This antibody is purified through a protein A column, followed by peptide affinity purification.

Target Details

Target:	GCHFR
Alternative Name:	GCHFR (GCHFR Products)

Target Details

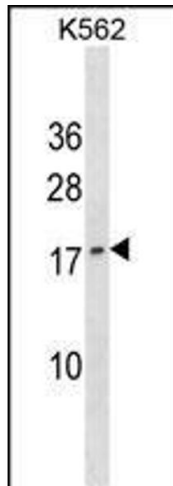
Background:	GTP cyclohydrolase I feedback regulatory protein binds to and mediates tetrahydrobiopterin inhibition of GTP cyclohydrolase I. The regulatory protein, GCHFR, consists of a homodimer. It is postulated that GCHFR may play a role in regulating phenylalanine metabolism in the liver and in the production of biogenic amine neurotransmitters and nitric oxide.
Molecular Weight:	9698
Gene ID:	2644
NCBI Accession:	NP_005249
UniProt:	P30047

Application Details

Application Notes:	WB: 1:1000
Restrictions:	For Research Use only

Handling

Format:	Liquid
Buffer:	Purified polyclonal antibody supplied in PBS with 0.09 % (W/V) sodium azide.
Preservative:	Sodium azide
Precaution of Use:	This product contains Sodium azide: a POISONOUS AND HAZARDOUS SUBSTANCE which should be handled by trained staff only.
Storage:	4 °C,-20 °C
Storage Comment:	GCHFR Antibody (C-term) can be refrigerated at 2-8 °C for up to 6 months. For long term storage, keep at -20 °C.
Expiry Date:	6 months



Western Blotting

Image 1. GCHFR Antibody (C-term) (ABIN1537231 and ABIN2850360) western blot analysis in K562 cell line lysates (35 µg/lane). This demonstrates the GCHFR antibody detected the GCHFR protein (arrow).