



[Go to Product page](#)

Datasheet for ABIN1537239
anti-KLHL28 antibody (C-Term)

1 Image

Overview

Quantity:	400 µL
Target:	KLHL28
Binding Specificity:	AA 384-411, C-Term
Reactivity:	Human
Host:	Rabbit
Clonality:	Polyclonal
Conjugate:	This KLHL28 antibody is un-conjugated
Application:	Western Blotting (WB)

Product Details

Immunogen:	This KLHL28 antibody is generated from rabbits immunized with a KLH conjugated synthetic peptide between 384-411 amino acids from the C-terminal region of human KLHL28.
Clone:	RB38281
Isotype:	Ig Fraction
Predicted Reactivity:	M
Purification:	This antibody is purified through a protein A column, followed by peptide affinity purification.

Target Details

Target:	KLHL28
Alternative Name:	KLHL28 (KLHL28 Products)

Target Details

Background: The function of this protein remains unknown.

Molecular Weight: 64192

Gene ID: 54813

NCBI Accession: [NP_060128](#)

UniProt: [Q9NXS3](#)

Application Details

Application Notes: WB: 1:1000

Restrictions: For Research Use only

Handling

Format: Liquid

Buffer: Purified polyclonal antibody supplied in PBS with 0.09 % (W/V) sodium azide.

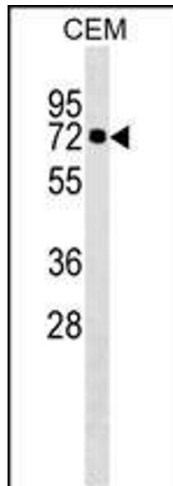
Preservative: Sodium azide

Precaution of Use: This product contains Sodium azide: a POISONOUS AND HAZARDOUS SUBSTANCE which should be handled by trained staff only.

Storage: 4 °C, -20 °C

Storage Comment: KLHL28 Antibody (C-term) can be refrigerated at 2-8 °C for up to 6 months. For long term storage, keep at -20 °C.

Expiry Date: 6 months



Western Blotting

Image 1. KLHL28 Antibody (C-term) (ABIN1537239 and ABIN2849863) western blot analysis in CEM cell line lysates (35 µg/lane). This demonstrates the KLHL28 Antibody detected the KLHL28 protein (arrow).