



[Go to Product page](#)

Datasheet for ABIN1537242  
**anti-RELT antibody (C-Term)**

1 Image

Overview

Quantity:	400 µL
Target:	RELT
Binding Specificity:	AA 387-413, C-Term
Reactivity:	Human
Host:	Rabbit
Clonality:	Polyclonal
Conjugate:	This RELT antibody is un-conjugated
Application:	Western Blotting (WB)

Product Details

Immunogen:	This RELT antibody is generated from rabbits immunized with a KLH conjugated synthetic peptide between 387-413 amino acids from the C-terminal region of human RELT.
Clone:	RB37615
Isotype:	Ig Fraction
Purification:	This antibody is purified through a protein A column, followed by peptide affinity purification.

Target Details

Target:	RELT
Alternative Name:	RELT ( <a href="#">RELT Products</a> )
Background:	The protein encoded by this gene is a member of the TNF-receptor superfamily. This receptor is

## Target Details

---

especially abundant in hematologic tissues. It has been shown to activate the NF-kappaB pathway and selectively bind TNF receptor-associated factor 1 (TRAF1). This receptor is capable of stimulating T-cell proliferation in the presence of CD3 signaling, which suggests its regulatory role in immune response. Two alternatively spliced transcript variants of this gene encoding the same protein have been reported.

---

Molecular Weight: 46092

---

Gene ID: 84957

---

NCBI Accession: [NP\\_116260](#), [NP\\_689408](#)

---

UniProt: [Q969Z4](#)

## Application Details

---

---

Application Notes: WB: 1:1000

---

Restrictions: For Research Use only

## Handling

---

---

Format: Liquid

---

Buffer: Purified polyclonal antibody supplied in PBS with 0.09 % (W/V) sodium azide.

---

Preservative: Sodium azide

---

Precaution of Use: This product contains Sodium azide: a POISONOUS AND HAZARDOUS SUBSTANCE which should be handled by trained staff only.

---

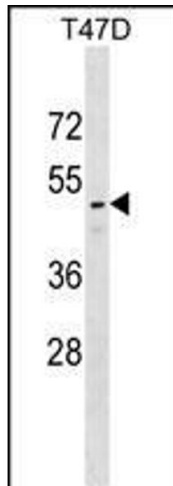
Storage: 4 °C,-20 °C

---

Storage Comment: RELT Antibody (C-term) can be refrigerated at 2-8 °C for up to 6 months. For long term storage, keep at -20 °C.

---

Expiry Date: 6 months



### Western Blotting

**Image 1.** RELT Antibody (C-term) (ABIN1537242 and ABIN2849186) western blot analysis in T47D cell line lysates (35 µg/lane). This demonstrates the RELT antibody detected the RELT protein (arrow).