

Datasheet for ABIN1537254
anti-PTDSS1 antibody (C-Term)[Go to Product page](#)

1 Image

Overview

Quantity:	400 µL
Target:	PTDSS1
Binding Specificity:	AA 390-418, C-Term
Reactivity:	Human
Host:	Rabbit
Clonality:	Polyclonal
Conjugate:	This PTDSS1 antibody is un-conjugated
Application:	Western Blotting (WB)

Product Details

Immunogen:	This PTDSS1 antibody is generated from rabbits immunized with a KLH conjugated synthetic peptide between 390-418 amino acids from the C-terminal region of human PTDSS1.
Clone:	RB37280
Isotype:	Ig Fraction
Predicted Reactivity:	B, Ha, M, Rat
Purification:	This antibody is purified through a protein A column, followed by peptide affinity purification.

Target Details

Target:	PTDSS1
Alternative Name:	PTDSS1 (PTDSS1 Products)

Target Details

Background: Phosphatidylserine (PS) accounts for 5 to 10 % of cell membrane phospholipids. In addition to its role as a structural component, PS is involved in cell signaling, blood coagulation, and apoptosis. PS is synthesized by a calcium-dependent base-exchange reaction catalyzed by PS synthases (EC 2.7.8.8), like PTDSS1, that exchange L-serine for the polar head group of phosphatidylcholine (PC) or phosphatidylethanolamine (PE) (Sturbois-Balcerzak et al., 2001 [PubMed 11084049]).

Molecular Weight: 55528

Gene ID: 9791

NCBI Accession: [NP_055569](#)

UniProt: [P48651](#)

Application Details

Application Notes: WB: 1:1000

Restrictions: For Research Use only

Handling

Format: Liquid

Buffer: Purified polyclonal antibody supplied in PBS with 0.09 % (W/V) sodium azide.

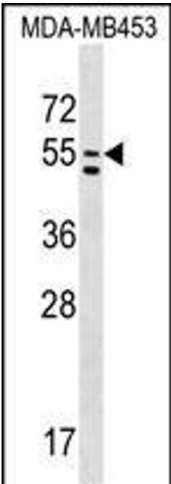
Preservative: Sodium azide

Precaution of Use: This product contains Sodium azide: a POISONOUS AND HAZARDOUS SUBSTANCE which should be handled by trained staff only.

Storage: 4 °C, -20 °C

Storage Comment: PTDSS1 Antibody (C-term) can be refrigerated at 2-8 °C for up to 6 months. For long term storage, keep at -20 °C.

Expiry Date: 6 months



Western Blotting

Image 1. PTDSS1 Antibody (C-term) (ABIN1537254 and ABIN2848773) western blot analysis in MDA-M cell line lysates (35 µg/lane). This demonstrates the PTDSS1 antibody detected the PTDSS1 protein (arrow).