

Datasheet for ABIN1537257
anti-RGMA antibody (C-Term)[Go to Product page](#)

1 Image

Overview

Quantity:	400 µL
Target:	RGMA
Binding Specificity:	AA 390-418, C-Term
Reactivity:	Human
Host:	Rabbit
Clonality:	Polyclonal
Conjugate:	This RGMA antibody is un-conjugated
Application:	Western Blotting (WB)

Product Details

Immunogen:	This RGMA antibody is generated from rabbits immunized with a KLH conjugated synthetic peptide between 390-418 amino acids from the C-terminal region of human RGMA.
Clone:	RB39658
Isotype:	Ig Fraction
Purification:	This antibody is purified through a protein A column, followed by peptide affinity purification.

Target Details

Target:	RGMA
Alternative Name:	RGMA (RGMA Products)
Background:	This gene encodes a member of the repulsive guidance molecule family. The encoded protein

Target Details

is a glycosylphosphatidylinositol-anchored glycoprotein that functions as an axon guidance protein in the developing and adult central nervous system. This protein may also function as a tumor suppressor in some cancers. Alternate splicing results in multiple transcript variants.

Molecular Weight: 49347

Gene ID: 56963

NCBI Accession: [NP_001159758](#), [NP_001159759](#), [NP_001159760](#), [NP_001159761](#), [NP_064596](#)

UniProt: [Q96B86](#)

Pathways: [Tube Formation](#)

Application Details

Application Notes: WB: 1:1000

Restrictions: For Research Use only

Handling

Format: Liquid

Buffer: Purified polyclonal antibody supplied in PBS with 0.09 % (W/V) sodium azide.

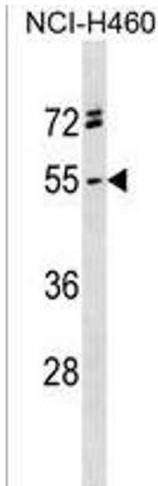
Preservative: Sodium azide

Precaution of Use: This product contains Sodium azide: a POISONOUS AND HAZARDOUS SUBSTANCE which should be handled by trained staff only.

Storage: 4 °C, -20 °C

Storage Comment: RGMA Antibody (C-term) can be refrigerated at 2-8 °C for up to 6 months. For long term storage, keep at -20 °C.

Expiry Date: 6 months



Western Blotting

Image 1. RG Antibody (C-term) (ABIN1537257 and ABIN2838199) western blot analysis in NCI- cell line lysates (35 µg/lane).This demonstrates the RG antibody detected the RG protein (arrow).