

Datasheet for ABIN1537272
anti-MON1B antibody (C-Term)



[Go to Product page](#)

1 Image

Overview

Quantity:	400 µL
Target:	MON1B
Binding Specificity:	AA 396-425, C-Term
Reactivity:	Human, Mouse
Host:	Rabbit
Clonality:	Polyclonal
Conjugate:	This MON1B antibody is un-conjugated
Application:	Western Blotting (WB)

Product Details

Immunogen:	This MON1B antibody is generated from rabbits immunized with a KLH conjugated synthetic peptide between 396-425 amino acids from the C-terminal region of human MON1B.
Clone:	RB25403
Isotype:	Ig Fraction
Predicted Reactivity:	Pr
Purification:	This antibody is purified through a protein A column, followed by peptide affinity purification.

Target Details

Target:	MON1B
Alternative Name:	MON1B (MON1B Products)

Target Details

Background: MON1B belongs to the MON1/SAND family.

Molecular Weight: 59217

Gene ID: 22879

NCBI Accession: [NP_055755](#)

UniProt: [Q7L1V2](#)

Application Details

Application Notes: WB: 1:1000

Restrictions: For Research Use only

Handling

Format: Liquid

Buffer: Purified polyclonal antibody supplied in PBS with 0.09 % (W/V) sodium azide.

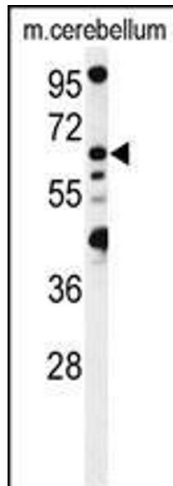
Preservative: Sodium azide

Precaution of Use: This product contains Sodium azide: a POISONOUS AND HAZARDOUS SUBSTANCE which should be handled by trained staff only.

Storage: 4 °C, -20 °C

Storage Comment: MON1B Antibody (C-term) can be refrigerated at 2-8 °C for up to 6 months. For long term storage, keep at -20 °C.

Expiry Date: 6 months



Western Blotting

Image 1. Western blot analysis of MON1B Antibody (C-term) (ABIN1537272 and ABIN2849322) in mouse cerebellum tissue lysates (35 µg/lane). MON1B (arrow) was detected using the purified Pab.