



[Go to Product page](#)

Datasheet for ABIN1537276
anti-BSDC1 antibody (C-Term)

1 Image

Overview

Quantity:	400 µL
Target:	BSDC1
Binding Specificity:	AA 397-425, C-Term
Reactivity:	Human
Host:	Rabbit
Clonality:	Polyclonal
Conjugate:	This BSDC1 antibody is un-conjugated
Application:	Western Blotting (WB)

Product Details

Immunogen:	This BSDC1 antibody is generated from rabbits immunized with a KLH conjugated synthetic peptide between 397-425 amino acids from the C-terminal region of human BSDC1.
Clone:	RB36583
Isotype:	Ig Fraction
Predicted Reactivity:	B, M
Purification:	This antibody is purified through a protein A column, followed by peptide affinity purification.

Target Details

Target:	BSDC1
Alternative Name:	BSDC1 (BSDC1 Products)

Target Details

Background: BSDC1 is a 430 amino acid protein encoded by a gene mapping to chromosome 1. Chromosome 1 is the largest human chromosome spanning about 260 million base pairs and making up 8 % of the human genome. There are about 3,000 genes on chromosome 1, and considering the great number of genes there are also a large number of diseases associated with chromosome 1. Notably, the rare aging disease Hutchinson-Gilford progeria is associated with the LMNA gene which encodes lamin A. When defective, the LMNA gene product can build up in the nucleus and cause characteristic nuclear blebs. The mechanism of rapidly enhanced aging is unclear and is a topic of continuing exploration. The MUTYH gene is located on chromosome 1 and is partially responsible for familial adenomatous polyposis. Stickler syndrome, Parkinsons, Gaucher disease and Usher syndrome are also associated with chromosome 1. A breakpoint has been identified in 1q which disrupts the DISC1 gene and is linked to schizophrenia. Aberrations in chromosome 1 are found in a variety of cancers including head and neck cancer, malignant melanoma and multiple myeloma.

Molecular Weight: 47163

Gene ID: 55108

NCBI Accession: [NP_001137360](#), [NP_001137361](#), [NP_001137362](#), [NP_060515](#)

UniProt: [Q9NW68](#)

Application Details

Application Notes: WB: 1:1000

Restrictions: For Research Use only

Handling

Format: Liquid

Buffer: Purified polyclonal antibody supplied in PBS with 0.09 % (W/V) sodium azide.

Preservative: Sodium azide

Precaution of Use: This product contains Sodium azide: a POISONOUS AND HAZARDOUS SUBSTANCE which should be handled by trained staff only.

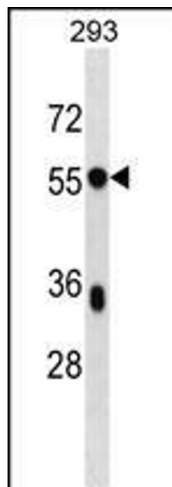
Storage: 4 °C, -20 °C

Storage Comment: BSDC1 Antibody (C-term) can be refrigerated at 2-8 °C for up to 6 months. For long term storage, keep at -20 °C.

Handling

Expiry Date: 6 months

Images



Western Blotting

Image 1. BSDC1 Antibody (C-term) (ABIN1537276 and ABIN2848524) western blot analysis in 293 cell line lysates (35 µg/lane). This demonstrates the BSDC1 antibody detected the BSDC1 protein (arrow).