

Datasheet for ABIN1537277
anti-Septin 6 antibody (C-Term)[Go to Product page](#)

2 Images

Overview

Quantity:	400 µL
Target:	Septin 6 (SEPT6)
Binding Specificity:	AA 400-426, C-Term
Reactivity:	Human, Mouse
Host:	Rabbit
Clonality:	Polyclonal
Conjugate:	This Septin 6 antibody is un-conjugated
Application:	Western Blotting (WB)

Product Details

Immunogen:	This SEPT6 antibody is generated from rabbits immunized with a KLH conjugated synthetic peptide between 400-426 amino acids from the C-terminal region of human SEPT6.
Clone:	RB38620
Isotype:	Ig Fraction
Predicted Reactivity:	B
Purification:	This antibody is purified through a protein A column, followed by peptide affinity purification.

Target Details

Target:	Septin 6 (SEPT6)
Alternative Name:	SEPT6 (SEPT6 Products)

Target Details

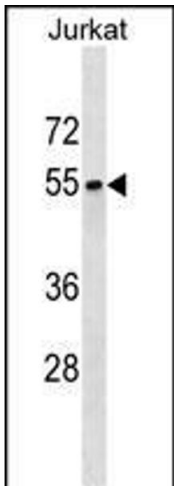
Background:	This gene is a member of the septin family of GTPases. Members of this family are required for cytokinesis. One version of pediatric acute myeloid leukemia is the result of a reciprocal translocation between chromosomes 11 and X, with the breakpoint associated with the genes encoding the mixed-lineage leukemia and septin 2 proteins. This gene encodes four transcript variants encoding three distinct isoforms. An additional transcript variant has been identified, but its biological validity has not been determined.
Molecular Weight:	49717
Gene ID:	23157
NCBI Accession:	NP_055944 , NP_665798 , NP_665799 , NP_665801
UniProt:	Q14141

Application Details

Application Notes:	WB: 1:1000. WB: 1:1000
Restrictions:	For Research Use only

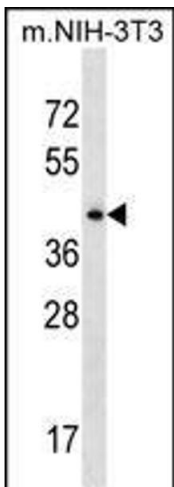
Handling

Format:	Liquid
Buffer:	Purified polyclonal antibody supplied in PBS with 0.09 % (W/V) sodium azide.
Preservative:	Sodium azide
Precaution of Use:	This product contains Sodium azide: a POISONOUS AND HAZARDOUS SUBSTANCE which should be handled by trained staff only.
Storage:	4 °C, -20 °C
Storage Comment:	SEPT6 Antibody (C-term) can be refrigerated at 2-8 °C for up to 6 months. For long term storage, keep at -20 °C.
Expiry Date:	6 months



Western Blotting

Image 1. SEPT6 Antibody (C-term) (ABIN1537277 and ABIN2850133) western blot analysis in Jurkat cell line lysates (35 µg/lane). This demonstrates the SEPT6 antibody detected the SEPT6 protein (arrow).



Western Blotting

Image 2. SEPT6 Antibody (C-term) (ABIN1537277 and ABIN2850133) western blot analysis in mouse NIH-3T3 cell line lysates (35 µg/lane). This demonstrates the SEPT6 antibody detected the SEPT6 protein (arrow).