

Datasheet for ABIN1537279  
**anti-PPIL2 antibody (C-Term)**[Go to Product page](#)

## 1 Image

## Overview

Quantity:	400 µL
Target:	PPIL2
Binding Specificity:	AA 402-431, C-Term
Reactivity:	Human
Host:	Rabbit
Clonality:	Polyclonal
Conjugate:	This PPIL2 antibody is un-conjugated
Application:	Western Blotting (WB)

## Product Details

Immunogen:	This PPIL2 antibody is generated from rabbits immunized with a KLH conjugated synthetic peptide between 402-431 amino acids from the C-terminal region of human PPIL2.
Clone:	RB33060
Isotype:	Ig Fraction
Purification:	This antibody is purified through a protein A column, followed by peptide affinity purification.

## Target Details

Target:	PPIL2
Alternative Name:	PPIL2 ( <a href="#">PPIL2 Products</a> )
Background:	This gene is a member of the cyclophilin family of peptidylprolyl isomerases. The cyclophilins

## Target Details

are a highly conserved ubiquitous family, members of which play an important role in protein folding, immunosuppression by cyclosporin A, and infection of HIV-1 virions. This protein interacts with the proteinase inhibitor eglin c and is localized in the nucleus. Multiple transcript variants encoding different isoforms have been found for this gene.

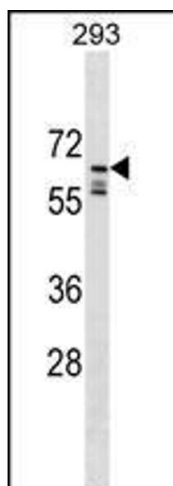
Molecular Weight:	58823
Gene ID:	23759
NCBI Accession:	<a href="#">NP_055152</a> , <a href="#">NP_680480</a> , <a href="#">NP_680481</a>
UniProt:	<a href="#">Q13356</a>

## Application Details

Application Notes:	WB: 1:1000
Restrictions:	For Research Use only

## Handling

Format:	Liquid
Buffer:	Purified polyclonal antibody supplied in PBS with 0.09 % (W/V) sodium azide.
Preservative:	Sodium azide
Precaution of Use:	This product contains Sodium azide: a POISONOUS AND HAZARDOUS SUBSTANCE which should be handled by trained staff only.
Storage:	4 °C, -20 °C
Storage Comment:	PPIL2 Antibody (C-term) can be refrigerated at 2-8 °C for up to 6 months. For long term storage, keep at -20 °C.
Expiry Date:	6 months



#### Western Blotting

**Image 1.** IL2 Antibody (C-term) (ABIN1537279 and ABIN2849712) western blot analysis in 293 cell line lysates (35 µg/lane). This demonstrates the IL2 antibody detected the IL2 protein (arrow).