



[Go to Product page](#)

Datasheet for ABIN1537283
anti-SMOC2 antibody (C-Term)

1 Image

Overview

Quantity:	400 µL
Target:	SMOC2
Binding Specificity:	AA 405-431, C-Term
Reactivity:	Human
Host:	Rabbit
Clonality:	Polyclonal
Conjugate:	This SMOC2 antibody is un-conjugated
Application:	Western Blotting (WB)

Product Details

Immunogen:	This SMOC2 antibody is generated from rabbits immunized with a KLH conjugated synthetic peptide between 405-431 amino acids from the C-terminal region of human SMOC2.
Clone:	RB37468
Isotype:	Ig Fraction
Purification:	This antibody is purified through a protein A column, followed by peptide affinity purification.

Target Details

Target:	SMOC2
Alternative Name:	SMOC2 (SMOC2 Products)
Background:	This gene encodes a member of the SPARC family (secreted protein acidic and rich in

Target Details

cysteine/osteonectin/BM-40), which are highly expressed during embryogenesis and wound healing. The gene product is a matricellular protein which promotes matrix assembly and can stimulate endothelial cell proliferation and migration, as well as angiogenic activity. Associated with pulmonary function, this secretory gene product contains a Kazal domain, two thymoglobulin type-1 domains, and two EF-hand calcium-binding domains. The encoded protein may serve as a target for controlling angiogenesis in tumor growth and myocardial ischemia. Alternative splicing results in multiple transcript variants. [provided by RefSeq].

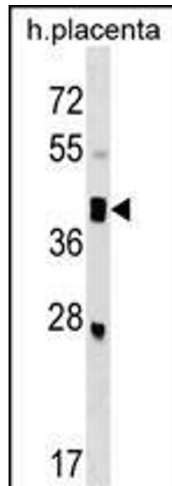
Molecular Weight:	49674
Gene ID:	64094
NCBI Accession:	NP_001159884 , NP_071421
UniProt:	Q9H3U7

Application Details

Application Notes:	WB: 1:1000
Restrictions:	For Research Use only

Handling

Format:	Liquid
Buffer:	Purified polyclonal antibody supplied in PBS with 0.09 % (W/V) sodium azide.
Preservative:	Sodium azide
Precaution of Use:	This product contains Sodium azide: a POISONOUS AND HAZARDOUS SUBSTANCE which should be handled by trained staff only.
Storage:	4 °C,-20 °C
Storage Comment:	SMOC2 Antibody (C-term) can be refrigerated at 2-8 °C for up to 6 months. For long term storage, keep at -20 °C.
Expiry Date:	6 months



Western Blotting

Image 1. SMOC2 Antibody (C-term) (ABIN1537283 and ABIN2849071) western blot analysis in human placenta tissue lysates (35 µg/lane). This demonstrates the SMOC2 antibody detected the SMOC2 protein (arrow).