

Datasheet for ABIN1537290
anti-Septin 8 antibody (C-Term)[Go to Product page](#)

1 Image

Overview

| | |
|----------------------|---|
| Quantity: | 400 µL |
| Target: | Septin 8 (SEPT8) |
| Binding Specificity: | AA 407-436, C-Term |
| Reactivity: | Human |
| Host: | Rabbit |
| Clonality: | Polyclonal |
| Conjugate: | This Septin 8 antibody is un-conjugated |
| Application: | Western Blotting (WB) |

Product Details

| | |
|---------------|--|
| Immunogen: | This SEPT8 antibody is generated from rabbits immunized with a KLH conjugated synthetic peptide between 407-436 amino acids from the C-terminal region of human SEPT8. |
| Clone: | RB36575 |
| Isotype: | Ig Fraction |
| Purification: | This antibody is purified through a protein A column, followed by peptide affinity purification. |

Target Details

| | |
|-------------------|---|
| Target: | Septin 8 (SEPT8) |
| Alternative Name: | SEPT8 (SEPT8 Products) |
| Background: | SEPT8 is a member of the highly conserved septin family. Septins are 40- to 60-kD GTPases |

Target Details

that assemble as filamentous scaffolds. They are involved in the organization of submembranous structures, in neuronal polarity, and in vesicle trafficking (Blaser et al., 2003 [PubMed 12909369]).

Molecular Weight: 55756

Gene ID: 23176

NCBI Accession: [NP_001092281](#), [NP_001092282](#), [NP_001092283](#), [NP_055961](#)

UniProt: [Q92599](#)

Application Details

Application Notes: WB: 1:1000

Restrictions: For Research Use only

Handling

Format: Liquid

Buffer: Purified polyclonal antibody supplied in PBS with 0.09 % (W/V) sodium azide.

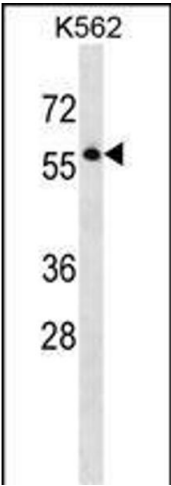
Preservative: Sodium azide

Precaution of Use: This product contains Sodium azide: a POISONOUS AND HAZARDOUS SUBSTANCE which should be handled by trained staff only.

Storage: 4 °C, -20 °C

Storage Comment: SEPT8 Antibody (C-term) can be refrigerated at 2-8 °C for up to 6 months. For long term storage, keep at -20 °C.

Expiry Date: 6 months



Western Blotting

Image 1. SEPT8 Antibody (C-term) (ABIN1537290 and ABIN2848521) western blot analysis in K562 cell line lysates (35 µg/lane). This demonstrates the SEPT8 antibody detected the SEPT8 protein (arrow).